



8-1951

The Bulletin, series 47, number 2, August (1951)

Moorhead State Teachers College

Follow this and additional works at: <https://red.mnstate.edu/thebulletin>

Researchers wishing to request an accessible version of this PDF may [complete this form](#).

Recommended Citation

Moorhead State Teachers College, "The Bulletin, series 47, number 2, August (1951)" (1951). *The Bulletin (Newsletter/Journal)*. 96.

<https://red.mnstate.edu/thebulletin/96>

This Book is brought to you for free and open access by the University Archives at RED: a Repository of Digital Collections. It has been accepted for inclusion in The Bulletin (Newsletter/Journal) by an authorized administrator of RED: a Repository of Digital Collections. For more information, please contact RED@mnstate.edu.



*The Bulletin of
Moorhead State
Teachers College*



*"The Role of the Laboratory
School in the Education
of Teachers at
Moorhead State
Teachers College."*

by
G. D. ROBBINS, *Director*



SERIES 47

AUGUST 1951

NUMBER 2

Published by the State Teachers College, Moorhead, Minnesota. Issued four times a year in February, May, August, and November. Entered as second class matter at the post office at Moorhead, Minnesota, under the act of August 12, 1912.





PRESIDENT O. W. SNARR

Foreword

The purpose of this issue of The Bulletin is to present in picture and descriptive text the role the Laboratory School fulfills in the education of teachers at Moorhead State Teachers College.

The importance of the student teaching experience for prospective teachers cannot be overemphasized. It constitutes the culminating activity of the total program of teacher education requiring an integration of the student's general, specialized, and professional education into a functional pattern of behavior in the teaching-learning situation. As an exploratory and developmental discipline, it reveals in sharp focus the readiness of the teacher to take his place in the profession.

In our considered judgment a Laboratory School which is expressly established, organized, and administered to provide both a strong educational program for its pupils and an opportunity for students planning to become teachers to engage in professional experiences in the total teaching-learning situation under the guidance of highly qualified supervisors serves a unique and indispensable function in teacher education.

O. W. SNARR, *President*

The Purpose of this Bulletin



This Bulletin is directed to all who are interested in the manner in which a Laboratory School functions in the education of teachers for the schools of our State. The teaching profession recognizes that sound preparation of its personnel necessitates opportunity to experience professional responsibilities under qualified and skilled direction in an environment which typifies



the teaching-learning situation.

In this brochure we propose to indicate pictorially and descriptively how the Laboratory School at Moorhead State Teachers College makes a contribution toward the professional education of teachers for our schools.



The Laboratory School



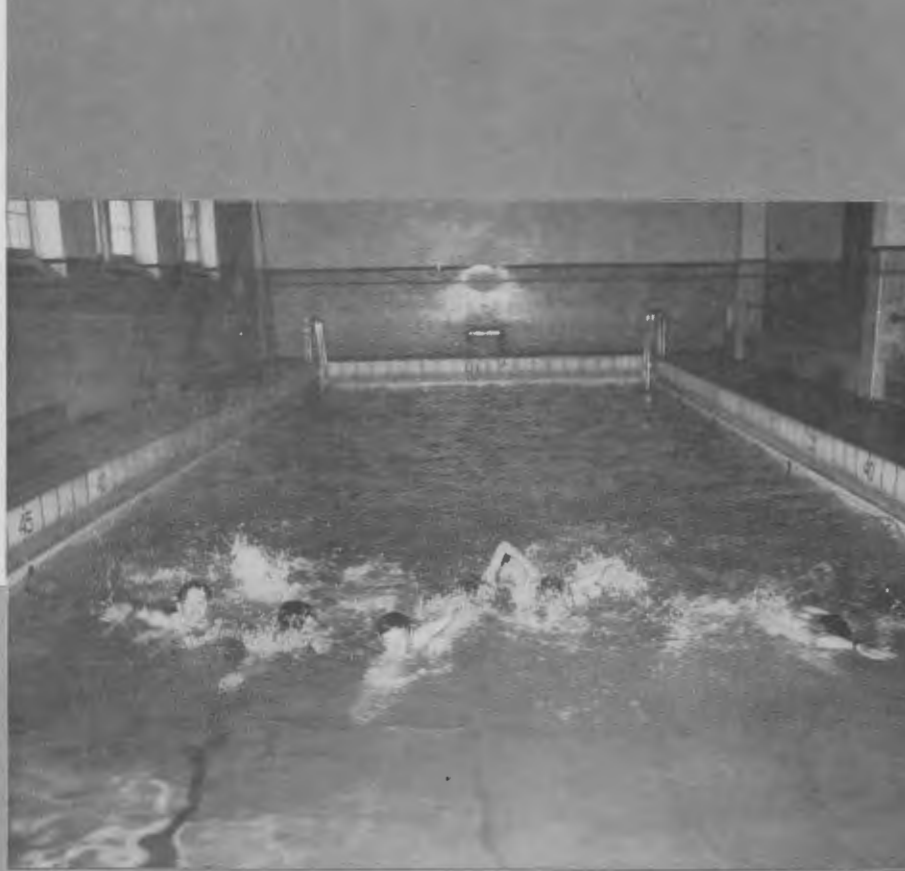
The Laboratory School at Moorhead State Teachers College is organized on the 6-6 plan, being the only Laboratory School at a State Teachers College in Minnesota to include the upper grades of high school. It is housed in a two story building which was erected in 1931 and is located on the campus.

The Elementary School, on the first floor, has nine classrooms and its own library. The Secondary School occupies the



second floor where there are classrooms and laboratories, the library, and an auditorium with stage. The basement floor includes the kitchen, lunchroom, and two recreational rooms.

Physical Education, Industrial Arts, and Home Economics courses are taught in other buildings on the campus using college facilities.



The Laboratory School Staff

The teaching staff of the Elementary School is made up of the following personnel: principal, teachers of kindergarten, first grade, second grade, third grade, fourth grade, fifth grade, and sixth grade. In addition there is a special instructor in physical education, a part time librarian, consultants in art and music, and a part time school nurse. All staff members have done graduate work beyond the B. S. degree and five of the full time staff have their M. A. degrees.



The teaching staff of the secondary school is made up of the following personnel: principal, teachers in English, a correlated English-Social Studies program in grades 7 and 8, Mathematics, Social Studies, Science, Commercial Studies, Industrial Arts, Home Economics, Vocal Music, Instrumental Music, Physical Education, Art and Speech, Foreign Language, Driver Education. There is a part time librarian and a part time school nurse. All staff members hold masters degrees and have done additional graduate work in their respective fields.





The Student Body

The student body of the Laboratory School represents a typical Minnesota school population group in as much as it is drawn from both urban Moorhead and rural Clay county areas. There are 260 pupils in the Elementary School, of which 176 are from Moorhead and 84 come from six closed school districts which transport their pupils to the campus. The secondary School has 160 pupils of which 99 are from Moorhead and 61 come from the rural districts.

Equipment and Program

Teachers in the Laboratory Schools are provided with equipment which will facilitate their teaching and which will provide student teachers with experience. Equipment includes a 16mm sound projector, slide projector, opaque projector, tape recorder, dark curtains in Elementary School library and Secondary School auditorium, ditto machine, typewriters, adding machine, radio, phonographs.

The program of the Laboratory Schools is designed to fulfill a two-fold function; to provide the pupils of the school with comprehensive curricular and co-curricular experiences, and to provide student teachers with experience in teaching-learning situations of all types. In addition to a full program of curricular offerings appropriate to a school of this size, additional activities, include: inter-scholastic athletics, debate, forensics, school paper, school annual, plays, band, home room, student councils in both schools, vocal groups, noon hour programs, and a hot lunch program. The school has an active Parents and Teachers Club in which student teachers participate.



Student Teaching

Degree graduates of Moorhead State Teachers College are required to present ten hours of credit in student teaching for graduation. This professional laboratory experience is done in the Laboratory School under the supervision of two or more staff members. Students must have a 1.0 honor point ratio to be admitted to student teaching and are carefully screened during that experience for their competence for certification. Their professional laboratory experiences during this period of time include observation of teaching, teaching under supervision, sole responsibility teaching, group conference with supervisors, individual conferences with supervisors, supervision of all types of co-curricular activities as noon hour, playgrounds, hot lunch, home room, athletics, forensics, dramatics, journalism, clubs, and others.



Student teachers are held responsible for as many of the normal responsibilities of teaching as possible including; making lesson plans, checking attendance, grading papers, requisitioning supplies, handling audio-visual aids, making grade reports, fulfilling guidance responsibilities, filling out cumulative records, attending parents-teachers club meetings, and others. The purpose of the program is to familiarize them with the responsibilities of teaching and to aid the student to the acquisition of knowledge, understanding, skills, attitudes, and appreciations necessary for success in teaching.



