



11-7-1932

## The Western Mystic, November 7, 1932

Moorhead State Teachers College

Follow this and additional works at: <https://red.mnstate.edu/western-mistic>

Researchers wishing to request an accessible version of this PDF may [complete this form](#).

---

### Recommended Citation

Moorhead State Teachers College, "The Western Mystic, November 7, 1932" (1932). *The Western Mystic*. 33.

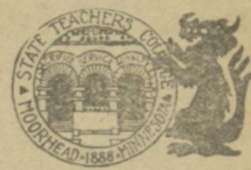
<https://red.mnstate.edu/western-mistic/33>

This News Article is brought to you for free and open access by the Student Newspapers at RED: a Repository of Digital Collections. It has been accepted for inclusion in The Western Mystic by an authorized administrator of RED: a Repository of Digital Collections. For more information, please contact [RED@mnstate.edu](mailto:RED@mnstate.edu).

# ELECTION EXTRA



## THE WESTERN MISTIC



VOL. 24

WESTERN MINNESOTA STATE TEACHERS COLLEGE  
Moorhead, Minnesota, Nov. 7, 1932

EXTRA!

# HUGE POLITICAL RALLY TO BE STAGED IN GYM TONIGHT

## ROOSEVELT HAS DECISIVE LEAD IN DIGEST POLL

POLL OF 3,000,000 IS CLOSED AND ROOSEVELT IS LEADING HOOVER BY 565,000

That Roosevelt will be elected by an overwhelming majority over Hoover and that other candidates will play a very minor part in the vote-getting is the opinion to be gained from the final results of the nation-wide presidential straw vote conducted by the Literary Digest.

Out of the grand total of over three million votes polled Hoover gets 1,150,398, Roosevelt gets 1,715,789, while Norman Thomas the Socialist candidate receives third place with 148,079. Reckoned on a percentage basis Roosevelt leads very decisively with 55.99 per cent of the total vote, Hoover has 37.53 per cent, and Thomas a meagre 4.84 per cent. In counting the electoral votes Roosevelt's dominance is even more evident. The score stands 474 for Roosevelt; to Hoover's 57, or in other words Roosevelt bags 41 out of the 48 states leaving just seven for Hoover.

### Sampling Is Wide

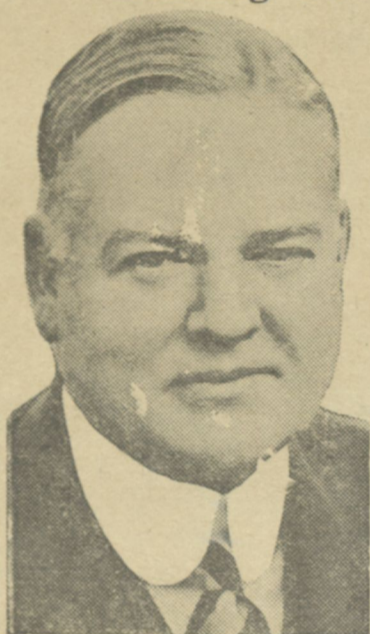
Although the vote is not by any means as large as that which will be cast in the election the three million votes should constitute quite a reliable sampling and give a fairly accurate estimate of what the trend will be. Reaching, as it does, all the classes of people, the Digest poll shows the public opinion in the issue and if the percentages are applied to the possible vote cast on election day, which amounted to 36,000,000 in 1928, it can be readily surmised that November 5 will witness a landslide for the Democratic nominee.

An unusual amount of interest is being shown this year in the election and especially among the minor candidates who can scarcely hope to reach the White House. Among the "protest" groups the Socialists are the strongest with Norman Thomas, a nationally known figure as candidate. Although it is very doubtful that he will carry off any electoral votes, indicators are that he will poll 2,000,000 votes or better, which is very substantial increase over the 1928 total. Other minor candidates also expect an increased support over that of 1928. Straw vote indications are that the Communists may poll 200,000 votes as against 48,770 in 1928. Gen. Jacob Coxey, the Farmer-Laborite, may boost his figure to 50,000 or 60,000 while Verne Reynolds, Socialist-Laborite, will poll perhaps 25,000.

### Shift Is 36 Percent

It is difficult to state which of the major parties will be hurt by this protest vote. The Democratic party leaders assert that theirs is the major protest party in the campaign, but leaders of the Socialists claim their own increase will come mostly from the ranks of the Democrats.

## Two Leading Presidential Candidates



HERBERT HOOVER



FRANKLIN D. ROOSEVELT

## Party Stands On Major Issues

### REPUBLICANS

#### Unemployment and Relief

True to American traditions and principles of government the administration has regarded the relief problem as one of state and local responsibility.

To provide against the possibility of failure of local and state agencies, the President has urged Congress to create an emergency relief fund for temporary loans . . . .

#### Agriculture

The Republican party pledges itself to the principle of assistance to cooperative marketing associations, owned and controlled by the farmers themselves through the provisions of Agricultural Marketing Act . . . .

The Party pledges itself to make such revision of tariff schedules as economic changes require to maintain the parity of protection to agriculture with other industries.

Pledges reconsideration of tax system.

#### The Tariff

The Republican Party always has been a staunch supporter of the American system of a protective tariff. The Republican party has long supported the policy of flexible tariff, giving the president, after investigation, the right to modify rates named by Congress.

#### Foreign Affairs

The Party will continue to maintain its attitude of protecting our national interests and policies wherever threatened but at the same time promoting common understanding. . . .

The facilitation of world intercourse, the freeing of commerce from unnecessary impediments, the removal of international difficulties and the methods of their solution and the methods of their solution . . . .

### DEMOCRATS

We advocate the extension of federal credit to the states to provide unemployment relief wherever the diminishing resources of the states make it impossible for them to provide for the needy; expansion of the federal program of necessary and useful construction

We advocate unemployment and old age insurance under state laws.

We favor the restoration of agriculture, the nation's basic industry; better financing of farm mortgages through recognized farm bank agencies at low rates of interest on an amortization plan, giving preference to credits for redemption of farms and homes sold under foreclosure.

Extension and development of the Farm Cooperative movement and effective control of our crop surpluses so that our farmers may have the full benefit of the domestic market.

We advocate a competitive tariff for revenue, with a fact-finding tariff commission free from executive interference; reciprocal trade agreements with other nations, and an international economic conference designed to restore international trade and facilitate exchange.

We advocate a firm foreign policy, including peace with all the world and the settlement of international disputes by arbitration; no interference in the internal affairs of other nations; the sanctity of treaties and the maintenance of good faith and good will in financial obligations; adherence to the World Court with appending reservations; the Pact of Paris abolishing war . . . . We oppose . . . .

## VOTING PUBLIC INVITED TO HEAR FINAL CAMPAIGN PLEDGES OF MAJOR PARTIES

Drum Corps, Dragon Band, Speakers And Demonstrations For Hoover, Roosevelt, Thomas, Olson, Brown, Gump On Program; Glasrud Presides

On the eve of the most bitterly contested election in recent years all of the major political parties will have an opportunity to make their final campaign pleas, when the gigantic political rally sponsored by the International Relations Club of M. S. T. C. gets under way at 8:00 p. m. tonight in the new Gymnasium. More than 2,000 college students and townspeople are expected to attend

## SOCIALISTS, FOUR MINOR PARTIES IN POLITICAL RACE

THOMAS, FOSTER, UPSHAW, COXEY, REYNOLDS ARE PRESIDENTIAL CANDIDATES

With a Socialist candidate for president who gives promise of polling the largest number of votes ever accorded a Socialist nominee, and with four other minor parties in the presidential race, balloting will be watched with keen interest by politicians and the general public alike, for it is with these candidates that dissatisfied citizens usually cast their votes.

The four minor groups besides the Socialists who have presidential candidates in the field are the Communist, Prohibition, Farmer-Labor, and Socialist-Labor parties.

### Socialists Strong

The Socialist vote is expected to go over the two million mark, a great increase over the 267,000 total of 1928. Norman Thomas, the Socialist candidate is recognized even by those not of his own political faith as one of the most able and brilliant men in American public life. He is forty-eight years old and attended college first at Bucknell and later at Princeton. He became a minister but in 1913 left the ministry to engage in social work. Thomas was at the head of the Socialist ticket in the election of 1928.

Heading the radical Communist party is William Z. Foster, a former Socialist who was expelled from the party in 1909 because of his extreme views. He was the Communist candidate for president in 1924 and 1928

### Upshaw Dry Candidate

Backed by a party which is primarily interested in only one issue, prohibition, William D. Upshaw, the nominee, is directly opposed to the stand taken by the Republican and Democratic parties on this issue. Upshaw, a native Georgian, served as a representative in Congress from 1919 to 1927. As a magazine editor and as an author, he has always been a vigorous supporter of prohibition.

The well-known "General" Jacob S. Coxey is the candidate of the Farmer-Labor party, a group organized in 1928 and distinct from the Minnesota party of the same name. Coxey has been an unsuccessful candidate for various major political offices and is at present . . . .

a program of speeches on behalf of the chief gubernatorial and presidential candidates, enlivened at intervals by the appearance of the Drum and Bugle Corps of the Moorhead post of the American Legion, and the College Band.

### To Have Straw Vote

Throughout the day, energetic campaigns will be carried on by the various political parties in an endeavor not only to influence the vote in the college straw poll but to arouse their partisans to make an enthusiastic demonstration at the rally in the evening. The headquarters of all the parties will be in MacLean Hall, the Socialist Party being established in room 236, the Republicans in room 108, and the Democrats in 110. A general headquarters in room 105 will serve as the general office for those in charge of the rally.

At 7:00 p. m. adherents of each of the parties will gather in their various rooms to prepare for their parts in the program. Party committees and cheerleaders will arrange the marching of their groups so that at 7:30 the first of the parties, the Democrats, will march up to their section on the south side of the gymnasium. Directly following the Democrats will be the state Farmer-Labor party, who will meet with the Democrats in room 110; and at 7:40 the Socialists will follow the Farmer-Laborites to the south side also, though nearer the entrance.

At 7:50 the last group, the Republicans, will parade into the left hand side of the hall.

### Corps To Play

In the meantime, the Legion Drum and Bugle Corps will have led a procession from the Moorhead Armory to the College, arriving at 8:00 p. m. In this parade will be represented all the parties on the evening's program.

Arriving at the College Physical Education building, the Drum and Bugle Corps will give a demonstration on the gym floor to open the rally. After a number by the College Band, the chairman of the evening, Clarence Glasrud, will introduce the first speaker, Alice Nelson, speaking on behalf of the Republican nominee for governor, Earl Brown. The band will play a number during the demonstration for Brown and when the group go back to their seats, the chairman will present Rhoda Salvorsen speaking for Governor Floyd Olson, candidate of the Farmer-Labor party for whom a similar demonstration is staged.

### Gump Speaks

The first of the . . . . to be given the . . . . Thompson . . . . on behalf . . . .

# The Western MiSTiC

A special edition of the weekly newspaper issued on the occasion of the Political Rally held at the Moorhead State Teachers College on the eve of the 1932 Presidential Election by the members of the International Relations Club under whose sponsorship the Rally is staged.

Printed at the College Print Shop.



Member Moorhead Chamber of Commerce

CO-EDITORS—CLARENCE GLASRUD AND DONALD BIRD

### USE YOUR VOTING PRIVILEGE!

It is a psychological fact that we appreciate most those things which are difficult for us to attain and though many other things may be of far more value to us, we consider them of little worth because they have cost us nothing. Though scarcely a half of our voters take the trouble of marking their ballots on election day, yet, if those same people were deprived of that inherent privilege, they would rise up in revolt at once.

We honor many of the world's great patriots because they lived, fought and died for the cause of freedom! And yet we hold the rights for which they gave their lives of so little value, that we won't trouble ourselves in the least to insure those privileges for ourselves and for posterity.

In the days when our countrymen had to give their lives for the right to govern themselves, they thought the cause well worth the price, but today when we complain that we are being ruled by an unscrupulous oligarchy, we think it a great sacrifice to go to the polls and cast our vote! It is an undeniable fact that there is corruption in all phases of our government today, but surely, that is a fault of our own.

When a people govern themselves and govern badly, they can only blame their own negligence and ignorance for that condition. To those two factors alone can be laid the attitude expressed by many American voters as "what difference will my vote make?" or "who should I vote for? They're all just as crooked!" An attitude such as that can only be attributed to indolence or gross ignorance!

Socialists ballyhoo has created a new party called Reprocratic. This party submits the names of Roosver and Hoovelt for president and Carner Gurtis for vice president.

Voting is a privilege, not a right, according to W. G. Monro, professor at Harvard. Be a privileged character and vote!

All parties promise the return of prosperity. Here's one hope—that whoever comes to power keeps his promise.

Do you know that a president of the United States must be:  
1—A natural-born citizen.  
2—35 years of age.  
3—14 years a resident of the United States.

## Huge Political Rally To Be Held Tonight

(Cont. from page one)  
played by the band will close the rally.

In general charge of arrangements is Clarence Glasrud, president of the International Relations Club, and Mr. Kise, adviser of the group. Heading the Democratic party committee is Helen Walker with Donald Bird as aide. Gorman Thompson is chairman of the Republican committee, with Franklin Brown and Alice Nelson working with him. The leader of the Socialists is Kenneth Johnson, who will be assisted by Lyman Bringgold and Dorothy Dunne, while Ward Thompson, chairman, and Rhoda Salvorson, are in charge of the Farmer-Labor party. Wilson Dokken is the Campus backer of the Andy Gump candidacy.

## History Class Makes Educational Poster

For the purpose of showing more vividly the progress of the United States from 1789 to 1932, Dr Locke's class in the middle period of American history is making a gigantic poster 23 feet long and 6 feet wide, portraying by a series of 30 mileposts, the achievements of the presidential administrations from George Washington to Herbert Hoover.

The immense sign, done in colors on a cloth background, will be displayed at the political rally tonight. The committee in charge consists of the following: Doris Johnson, chairman, Marjorie Fields, Norman Halvorson, Myrtle Kortgaard, Lottie Wambach, Marie Wilds, and Eunice Lamberton. The art work is being done by Charles Kirkevold.

## In Race for Minnesota Governorship



EARL BROWN REPUBLICAN



FLOYD OLSON FARMER-LABOR

## Republicans, Farm-Laborites In Bitter Struggle For Governorship Of Minnesota; Platforms Cited

Engendered and capitalized in the issue of economy is the campaign of Earl Brown, Republican entry in the gubernatorial race. Charging gross mismanagement on the part of the Olson regime, Mr. Brown is pledging a reduction of taxes throughout the state, and the curbing of governmental budget to the strict issue of economy.

From the platform endorsed by the Republican candidate, come various issues of importance and controversial to the Olson proposals. The main issues are:

### To Cut Appropriations

"Declaration for drastic retrenchment and reduction of load of taxation, and pledges party to reduce state appropriations at next legislative session at least \$5,000,000.

Pledges the party to policy of rigid economy.

Pledges the party to legislation which will make income tax a replacement tax.

Urges practical aid to farmers by reduction of governmental expenditures, by an equitable distribution of the tax burden, and by encouragement of the economic marketing of farm products.

Recommends that Rural Credits Bureau be taken out of politics and placed in hands of body of capable and experienced men.

### Would Simplify Government

Urges simplification of government, the elimination of unwarranted governmental activities, and the attainment of the highest efficiency in public service.

Of the immediate major issues to be confronted, the St. Lawrence waterway and development of inland waterway system are outstanding. Mr. Brown and the Republican party stand firmly for both of these.

"These are times that try men's souls. The summer soldier and the sunshine patriot will in this crisis, shrink from the service of their country; but he that stands it now, deserves the love and thanks of men and women."—Thomas Paine.

Economy enforced through the lowering of the tax levy and at the same time slicing the governmental budget down to its lowest possible level is the keynote on which Floyd B. Olson, is campaigning for reelection as Governor of the State of Minnesota, as the candidate of the Farmer-Labor party.

The evidence of the record regarding the events of the past two years under Governor Olson is perhaps the outstanding point advanced by the exponents of the State Farmer-Labor ticket. Concluding a tumultuous term, Mr. Olson stands firm on certain convictions regarding still further economy than he has thus far engendered.

### Favors Frazier Bill

From the Farmer-Labor platform so heartily endorsed by Olson, a few notations of pertinence might be made.

Indorsement of the Frazier Bill in Congress.

Endorsement of the principles of the McNary-Haugen Bill.

A graduated income tax, as a replacement tax, the proceeds to be used to relieve the tax burden of the farmer and home-owner.

### Would Tax Chains

A graduated tax and special tax on chain stores.

Immediate cash payment of all soldier bonus claims, to be financed by the issuance of treasury notes.

Indorsement of the principle of initiative and referendum, adequate old age pension, unemployment insurance.

Repeal of per capita limitation laws. An adequate tax on oleomargarine.

## HOOVER VICTORIOUS IN MAYVILLE COLLEGE POLL

With about three-fifths of the student body of Mayville, N. D., State Teachers College casting their ballots, President Hoover represented the choice of 53 per cent of those voting, Roosevelt 38 per cent and 9 per cent cast their vote for Norman Thomas of the Socialist party.

## ROOSEVELT HAS DECISIVE LEAD IN DIGEST POLL

(Cont. from page 1 co. 5)

against Hoover in the nation and the Daily Princetonian College poll running 5 to 3 for Hoover. In California the general poll is nearly 2 to 1 against Hoover but the University vote is 2 1/4 to 1 for Hoover."

## Roosevelt Gains Ground In Hearst Poll

According to the latest returns in the nation-wide presidential postcard poll carried on by the Hearst Newspapers, Governor Franklin D. Roosevelt has staged discernable comebacks in the group of battle-ground states, Illinois, Indiana, Ohio and Pennsylvania, creeping up steadily on the early Hoover lead.

In Illinois he received a majority of 873 out of 3,087 new ballots in contrast with a Hoover majority on the previous weekly tabulation of 207 out of 2,903 ballots. Roosevelt in Indiana got a 73 majority out of 1,149 votes, gaining 13 more majority than Hoover the week before. In Pennsylvania, Roosevelt made a tremendous advance turning a Hoover majority of 256 out of 3,914 votes into a Roosevelt majority of 287 out of 3,511 new ballots. The Hoover majority in Ohio was reduced by 75 percent.

Quite definitely two out of the four battleground states are now Roosevelt, with a good possibility of Ohio swinging into line. In the wake of his Detroit speech, Hoover has shown a decided pickup in Michigan.

DEBATE ANNOUNCEMENT

Elegibility for inter-collegiate debate will be determined by tryouts this year. Six or eight men and two or four women showing promise of coming up to the standard will be selected. Members of former squads as well as new candidates will try out. There will be two hours credit, but Freshmen are not eligible.

The subject is: The United States Should Agree to the Cancellation of Inter-allied War Debts. Plenty of material has been placed on reserve in the library. Tryouts will be held on Monday, November 21. See me immediately if interested.

—P. F. Loewen

"With the din of opinion and debate there was a keener scrutiny of institutions and domestic life than any we have known; there was sincere protesting against existing evils, and there was changes of employment dictated by conscience."—Emerson.

"We have been compelled to see what was weak in democracy as well as what was strong.—Lowell.

"To Americans, America is something more than a promise and an expectation."—Lowell.

# VOTE

According to Your Own