



Minnesota State University Moorhead  
**RED: a Repository of Digital Collections**

---

Yearbooks

Moorhead Campus School

---

1948

## **Baby Dragon (1948)**

Moorhead State Teachers College

Follow this and additional works at: [https://red.mnstate.edu/baby\\_dragon\\_yearbooks](https://red.mnstate.edu/baby_dragon_yearbooks)

Researchers wishing to request an accessible version of this PDF may [complete this form](#).

---

### **Recommended Citation**

Moorhead State Teachers College, "Baby Dragon (1948)" (1948). *Yearbooks*. 17.  
[https://red.mnstate.edu/baby\\_dragon\\_yearbooks/17](https://red.mnstate.edu/baby_dragon_yearbooks/17)

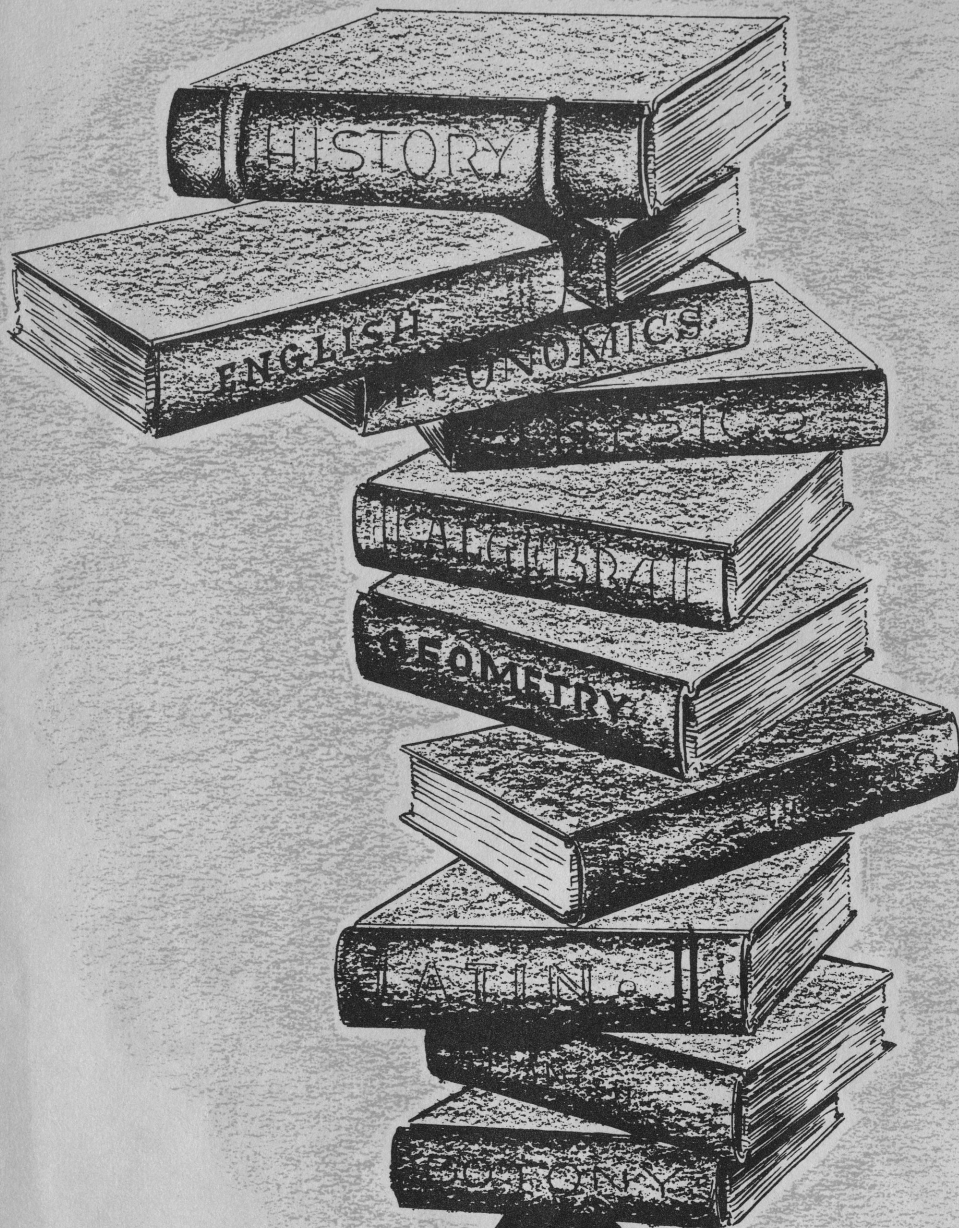
This Book is brought to you for free and open access by the Moorhead Campus School at RED: a Repository of Digital Collections. It has been accepted for inclusion in Yearbooks by an authorized administrator of RED: a Repository of Digital Collections. For more information, please contact [RED@mnstate.edu](mailto:RED@mnstate.edu).

A dark blue, textured book cover featuring a large, embossed illustration of a dragon. The dragon is depicted in profile, facing left, with its head raised and mouth open as if breathing fire. The flames are rendered with intricate, flame-like patterns. The dragon's body is covered in detailed scales, and its wings are partially visible. The entire illustration is embossed into the cover's texture.

BABY DRAGON



We, the Senior class of 1948, wish to dedicate our first annual to Dr. Ella A. Hawkinson, principal, as a tribute to her long years of guidance and service in this school.



*Administration*



Dr. O. W. Snarr  
President of College



Mr. Werner Brand  
Acting Principal



Miss Jane Johnston  
Science



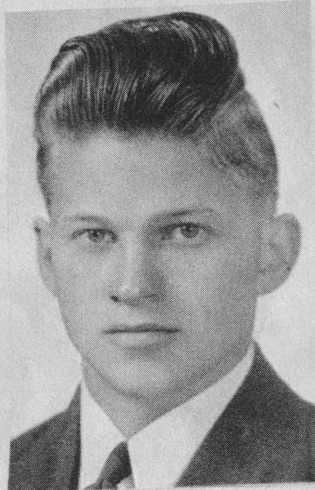
Miss Maude Wenck  
Music



Miss Evangeline Lindquist  
School Nurse



Mr. Fred D. Schneider  
Social Studies



Mr. Donald Anderson  
Athletic Department

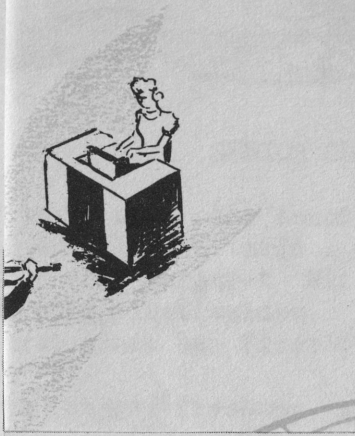


Mr. Otto Ursin  
Industrial Arts



Miss Evelyn Gantzer  
Secretary

Not pictured, Bertram McGarrity, Band and  
Mr. James Schroeder on leave of absence.



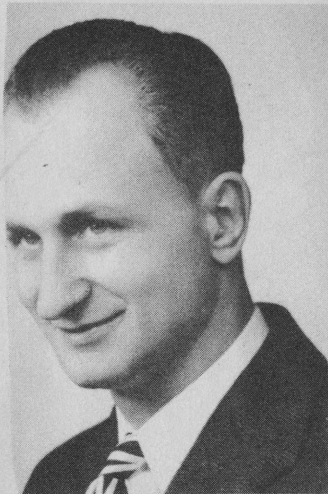
Dr. E. M. Spencer  
Director



Dr. Ella A. Hawkinson  
Principal



Miss Viola Petri  
Sr. High English



Mr. Neil Wohlwend  
Athletic Director



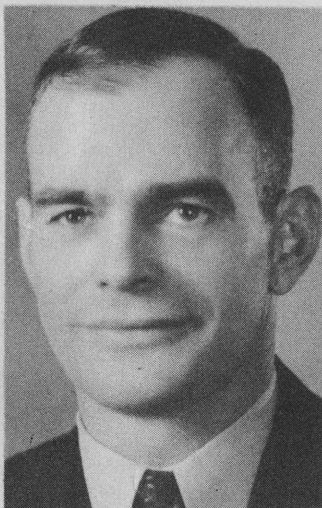
Miss Ragna Holen  
Home Economics



Mr. Nels Johnson  
Art



Miss Jessie McKellar  
Physical Education



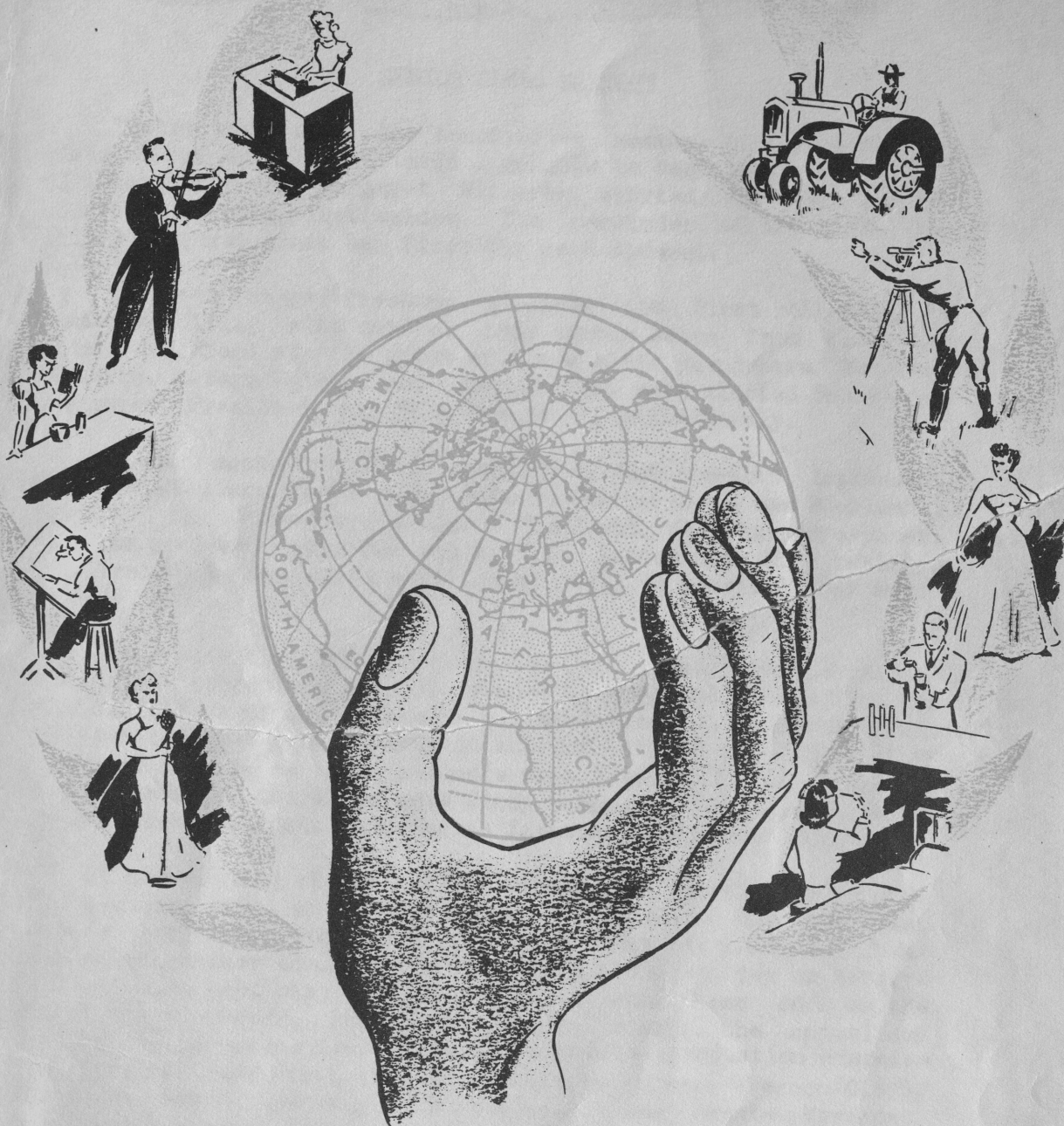
Mr. Roy Domek  
Athletic Director



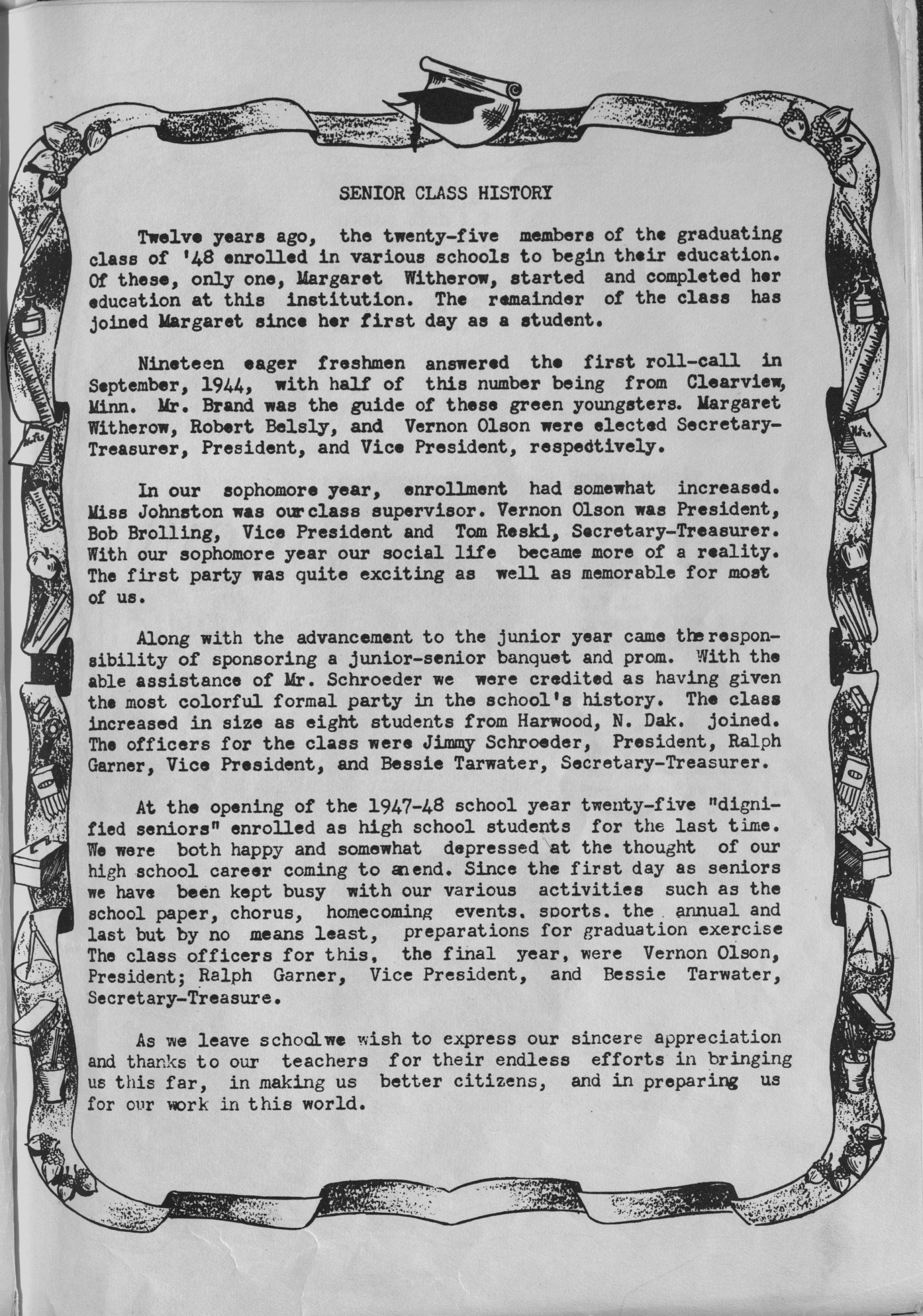
Miss Lyl Solem  
Jr. High English



Miss Flora Frick  
Health Education



*Seniors*



## SENIOR CLASS HISTORY

Twelve years ago, the twenty-five members of the graduating class of '48 enrolled in various schools to begin their education. Of these, only one, Margaret Witherow, started and completed her education at this institution. The remainder of the class has joined Margaret since her first day as a student.

Nineteen eager freshmen answered the first roll-call in September, 1944, with half of this number being from Clearview, Minn. Mr. Brand was the guide of these green youngsters. Margaret Witherow, Robert Belsly, and Vernon Olson were elected Secretary-Treasurer, President, and Vice President, respectively.

In our sophomore year, enrollment had somewhat increased. Miss Johnston was our class supervisor. Vernon Olson was President, Bob Brolling, Vice President and Tom Reski, Secretary-Treasurer. With our sophomore year our social life became more of a reality. The first party was quite exciting as well as memorable for most of us.

Along with the advancement to the junior year came the responsibility of sponsoring a junior-senior banquet and prom. With the able assistance of Mr. Schroeder we were credited as having given the most colorful formal party in the school's history. The class increased in size as eight students from Harwood, N. Dak. joined. The officers for the class were Jimmy Schroeder, President, Ralph Garner, Vice President, and Bessie Tarwater, Secretary-Treasurer.

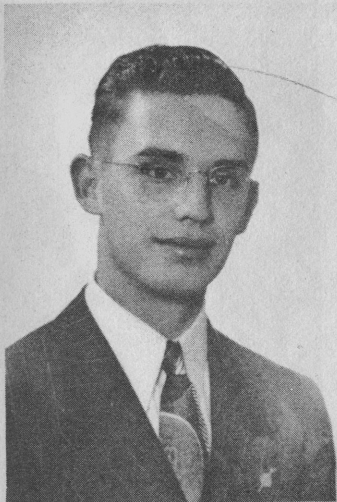
At the opening of the 1947-48 school year twenty-five "dignified seniors" enrolled as high school students for the last time. We were both happy and somewhat depressed at the thought of our high school career coming to an end. Since the first day as seniors we have been kept busy with our various activities such as the school paper, chorus, homecoming events, sports, the annual and last but by no means least, preparations for graduation exercise. The class officers for this, the final year, were Vernon Olson, President; Ralph Garner, Vice President, and Bessie Tarwater, Secretary-Treasurer.

As we leave school we wish to express our sincere appreciation and thanks to our teachers for their endless efforts in bringing us this far, in making us better citizens, and in preparing us for our work in this world.





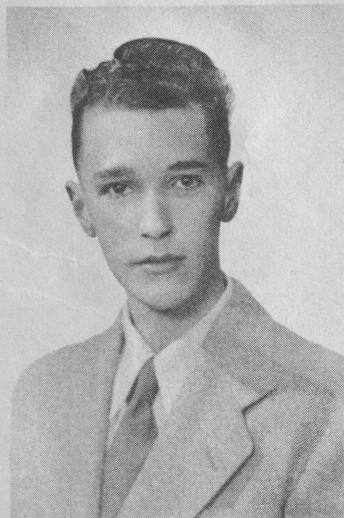
Lois Amundson  
Chorus 1,2,3,4  
Sewing Club 1,2  
Home Ec. Club 3  
Concert 3  
Girls' Glee Club 3  
Dragon's Eye 4  
Harwood Hi 1,2



Robert Belsly  
Student Commission 3,4  
Class Officer 1,3  
Thespian Society  
Chorus 1,2,3,4  
Track 3,4  
N.F.L. 3,4  
Dragon's Eye 4  
Basketball 2,3,4



Betty Bielfeldt  
Chorus 1,2,3,4  
Triple Trio 2  
Thespian Society  
Student Commission 2  
Dragon's Eye 1,2,3,4  
Cheerleader 2,3,4



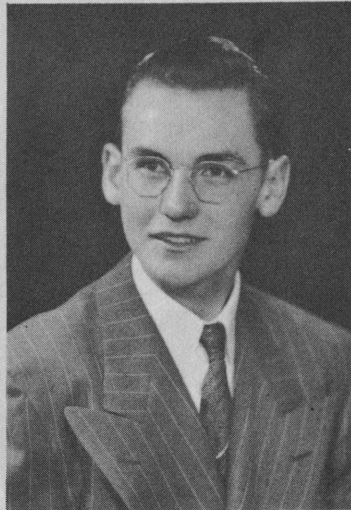
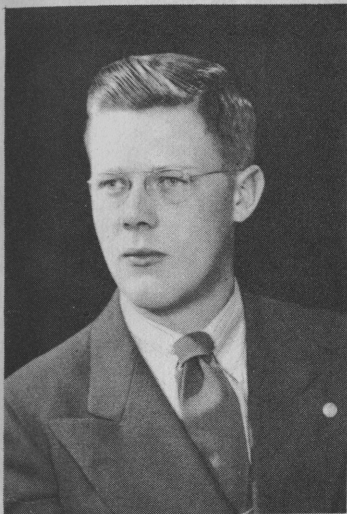
Robert Brolling  
Band 1  
Class Officer 2



Delene Ellenson  
Sewing Club 1,2  
Harwood Hi 1,2  
Chorus 1,2,3,4



Delores Ellenson  
Sewing Club 1,2  
Harwood Hi 1,2  
Chorus 1,2,3,4



Paul Fee  
Basketball 1,2  
Baseball 4  
Harwood Hi 1,2

Jack Gantzer  
Basketball 2,3,4  
Baseball 3,4  
Track 4  
Chorus 1,2,3,4  
Student Commission 3,4

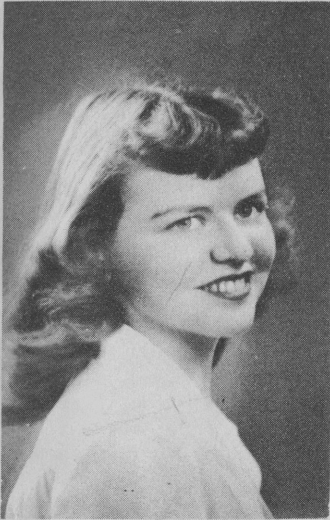


Joanne Gantzer  
Chorus 1,2  
Thespian Society  
Dragon's Eye 3,4  
Three-act play 4

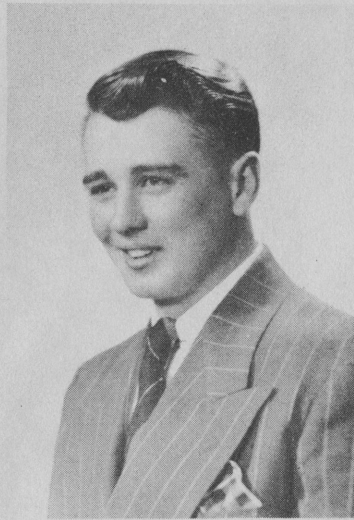
Ralph Garner  
Football 4  
Student Commission 3  
Forensics 1,2,3,4  
N.F.L. 2,3,4  
Track 4  
Thespian Society  
School Play 1,3,4  
Chorus 1,2  
Class Officer 3,4



Beatrice Haugen  
Sewing Club 1,2  
Harwood Hi 1,2  
Chorus 1,2,3,4  
Triple Trio 4  
Student Commission 3



Frances Haukebo  
Chorus 1,2,3,4  
Triple Trio 1,2,3,4  
Band 1,2,3  
Class Officer 1  
Three-act play 3



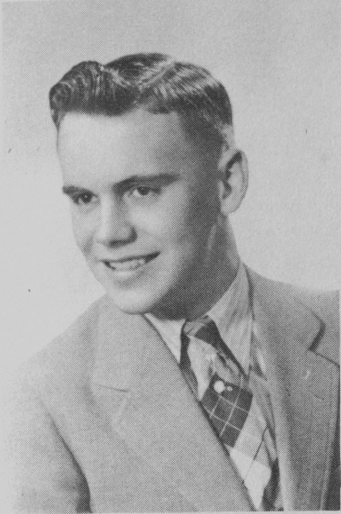
Donald Johnson  
Student Commission 2,4  
School Play 3,4  
Senior Escort to  
Homecoming Queen



Verne Johnson  
Football 3  
Baseball 3  
Basketball 1,2,3  
Harwood Hi 1,2  
Track 1,2,3



Beverly Leerhoff  
Dragon's Eye 1,4  
Chorus 1,2,3,4  
Editor- Annual 1947-48



Jim Schroeder

Basketball 1,3,4  
Baseball 2,3,4  
School Paper 2  
School Play 2  
Football 3,4  
Track 3,4  
Forensics 3,4  
Student Commission 3  
Class Officer 3  
N.F.L. 3,4



Mary Seaton

Chorus 1,2,3,4  
Triple Trio 3,4  
Band 1,2,3,4  
Dragon's Eye 4  
Three-act play (extra) 3  
Attendant to Queen 4



Bessie Tarwater

Homecoming Queen 4  
Class Officer 3,4  
Dragon's Eye 4  
Girls' Glee Club 1,2  
Chorus 1,2,3



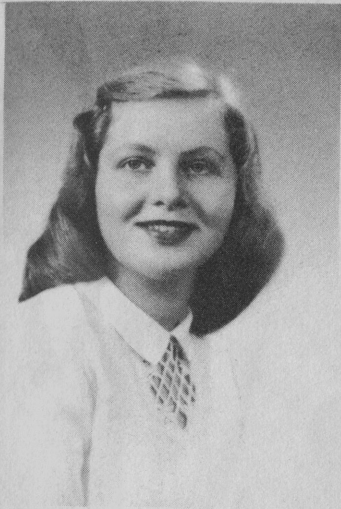
Leonard Walters

Baseball 1,2  
Football 1,2  
Chorus 1,2  
Army Veteran



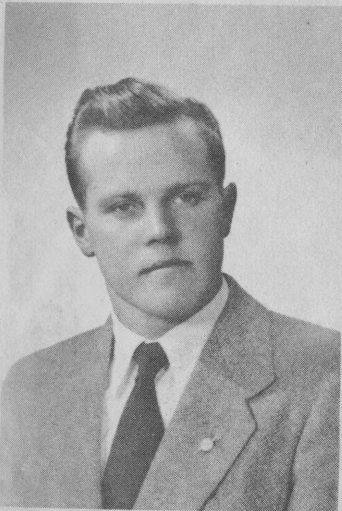
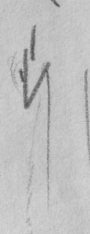
Margaret Witherow

Chorus 1,2,3,4  
Dragon's Eye 1,4  
Three-act play 3  
Thespian Society



Donna Mickelson

Chorus 1,2,3,4  
Triple Trio 3,4  
Three-act play 3  
Harwood Hi (Ed.) 1,2  
Sewing Club 1,2  
Dragon's Eye (Ed.) 4  
Student Commission 3,4  
Minnesota Girls' State 4  
Thespians Society



Vernon Olson

Football 1,2,3,4 Capt. 4  
Student Commission 1,2,3,4  
Forensics 1,2,3,4  
N.F.L. 2,3,4  
Track 3,4  
Thespians Society  
Class Officer 1,2,4  
School Play 1,3  
Chorus 1,2,3,4



Evangeline Peppas

Chorus 1,2,3,4  
Dragon's Eye 1,4  
Student Commission 1  
Band 1



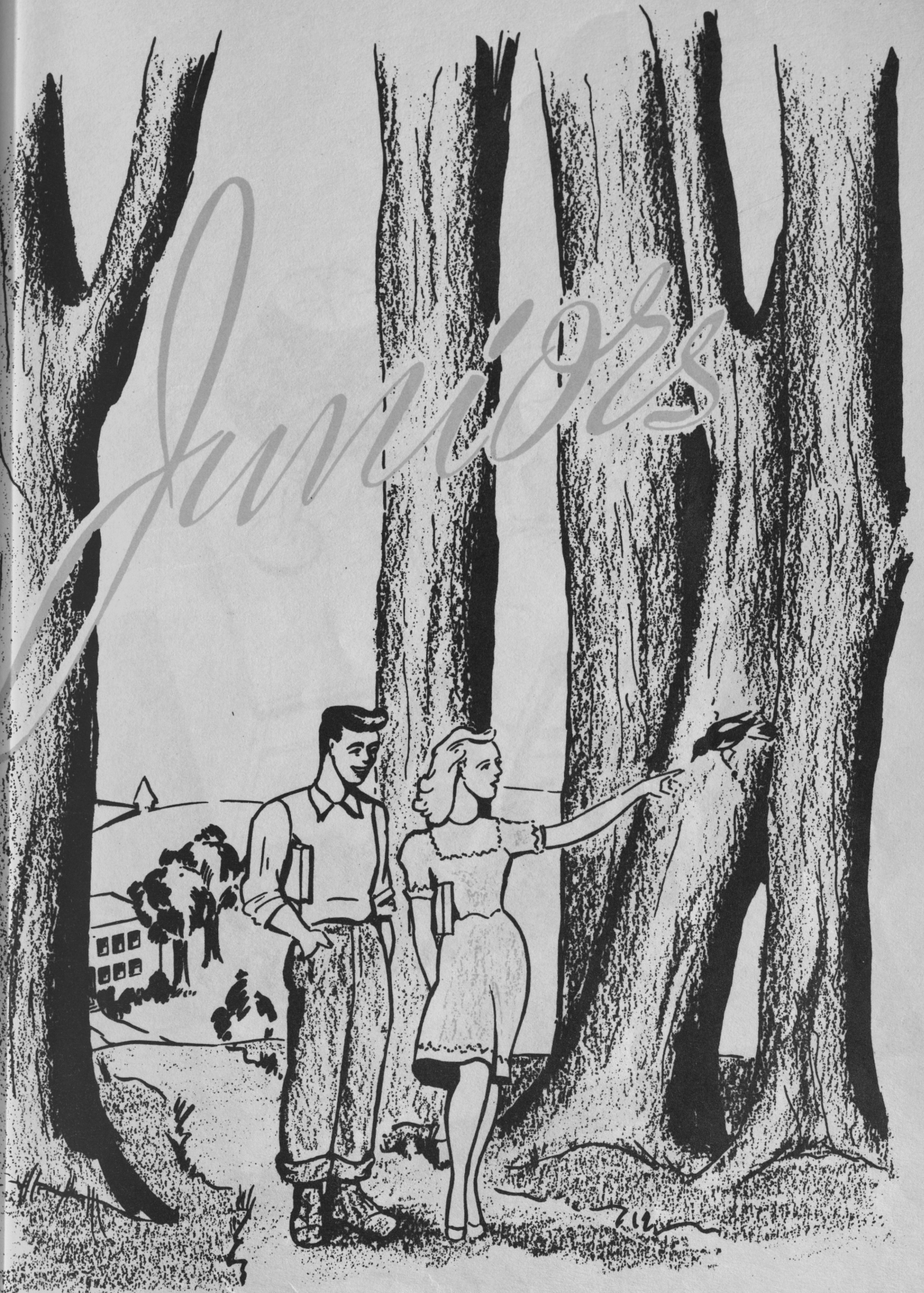
Tom Reski

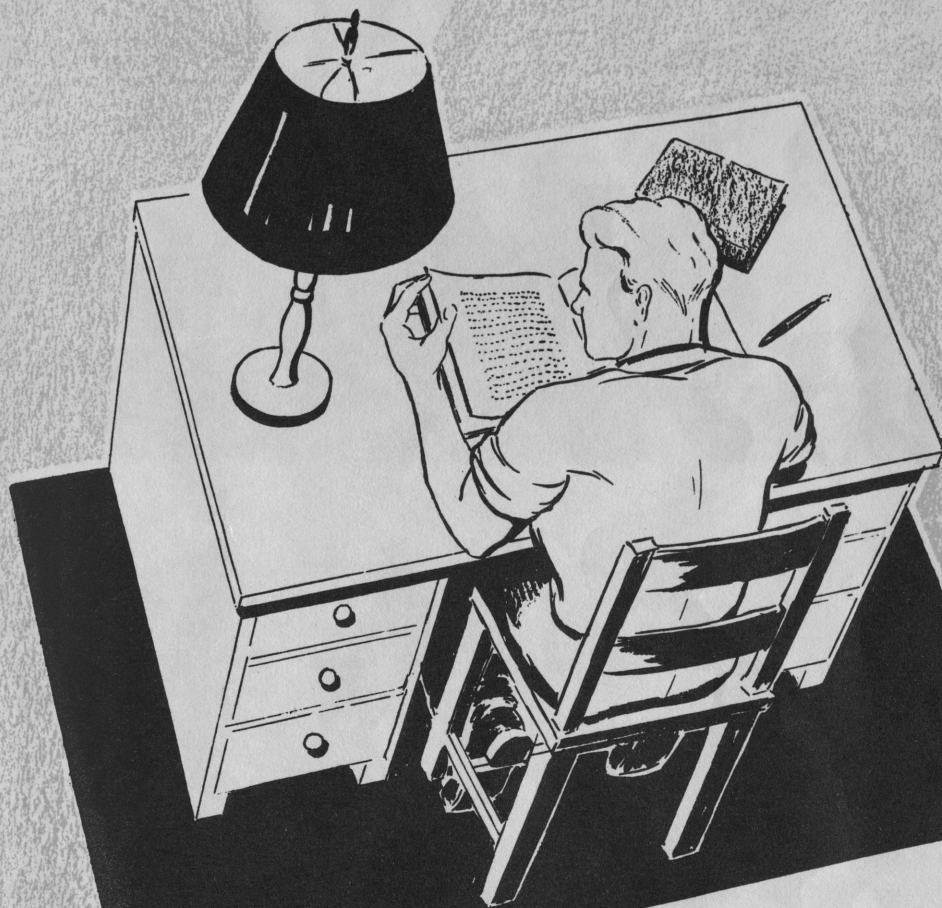
Basketball 1,2,3,4 Capt. 4  
Baseball 2,3,4  
Track 3,4  
Class Officer 2  
Student Commission 3  
Football 3,4



Ruth St. John

Thespians Society  
N.F.L. 3,4  
Student Commission 3,4  
School Play 4  
G.A.A. 2  
Science Club 2  
Chorus 2





Sophomores



E. Garner, L. Pond, C. Swenson, G. Peterson, B. Paulson, B. Peterson, D. Foldnaur, E. Johnson, V. Possehl, J. Wheeler, M. Olson, G. Siedschlag, M. Morgan, M. Staley, B. Nokken, E. Olke, M. Schumm, C. Jacobson, H. Schoephoerster, D. Frisch Not pictured, Bonnie Baugh, Pat Pinkney, and Kathryn Gantzer

### Sophomore Class History

The sophomore class of 1947-1948 is falling in with fine spirit since it started in the fall of 1946 as a fresh group of greenhorns.

In our freshmen year the class officers were as follows: President, Bob McGraw; Vice-President, Dave McGraw; Secretary, Ethel Garner; Treasurer, Marjorie Staley; Commission Representative -  $\frac{1}{2}$  year terms, Micky Schumm and Pat Pinkney.

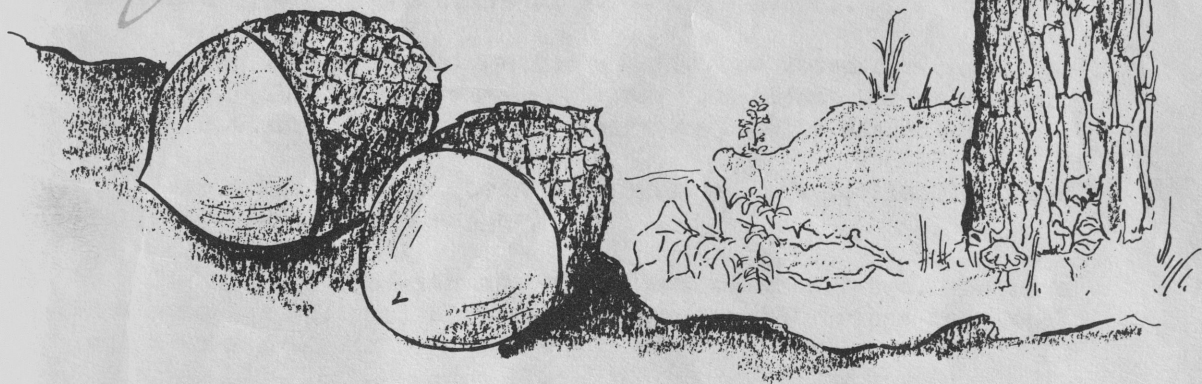
This year the class elected the following people to office: President, Hugh Schoephoerster; Vice-President, Cliff Jacobson; Secretary, Kathryn Gantzer; Treasurer, Derald Frisch; Commission Representative, Cliff Jacobson.

The class is well represented in the Student Commission with Margery Morgan; Music Commissioner; and Ethel Garner; Co-Library Commissioner present at the meetings.





Freshmen





J. Holte, M. Looch, G. Olson, I. Olke, E. Ramstad, M. Edenstrom, C. Swenson, W. Jacobson, E. Wilson, D. Jensen, E. Hauge, M. Rief, C. Oberg, D. Garner, D. Pinkney, G. Anderson, J. Narveson, C. Johaneson, M. Johnson, G. Olson Not pictured, Gordon Knauer, and Betty Kassenborg.

### Freshmen Class History

September, 1947, saw a new group of faces in the form of freshmen treading the halls of M. S. High School.

After we had been together a while, we voted for our class officers. The outcome was as follows: President, Gordon Knauer; Vice-President, Gloy Anderson; Secretary, Betty Kassenborg.

Our attendant to Queen Bessie Marie was Idella Olke, and her escort was Gordon Knauer.

We started out with an enrollment of twenty-two. We have one more new student; Marilyn Edenstrom. That brings the total up to twenty-three.

As the school year draws to a close, we are all anxiously awaiting the arrival of summer and the close of school. We, as a class, are very anxious to become sophomores.

**R**

*eadin'*

**R**

*itin'*

**R**

*ithmetic*

**ELEMENTARY**



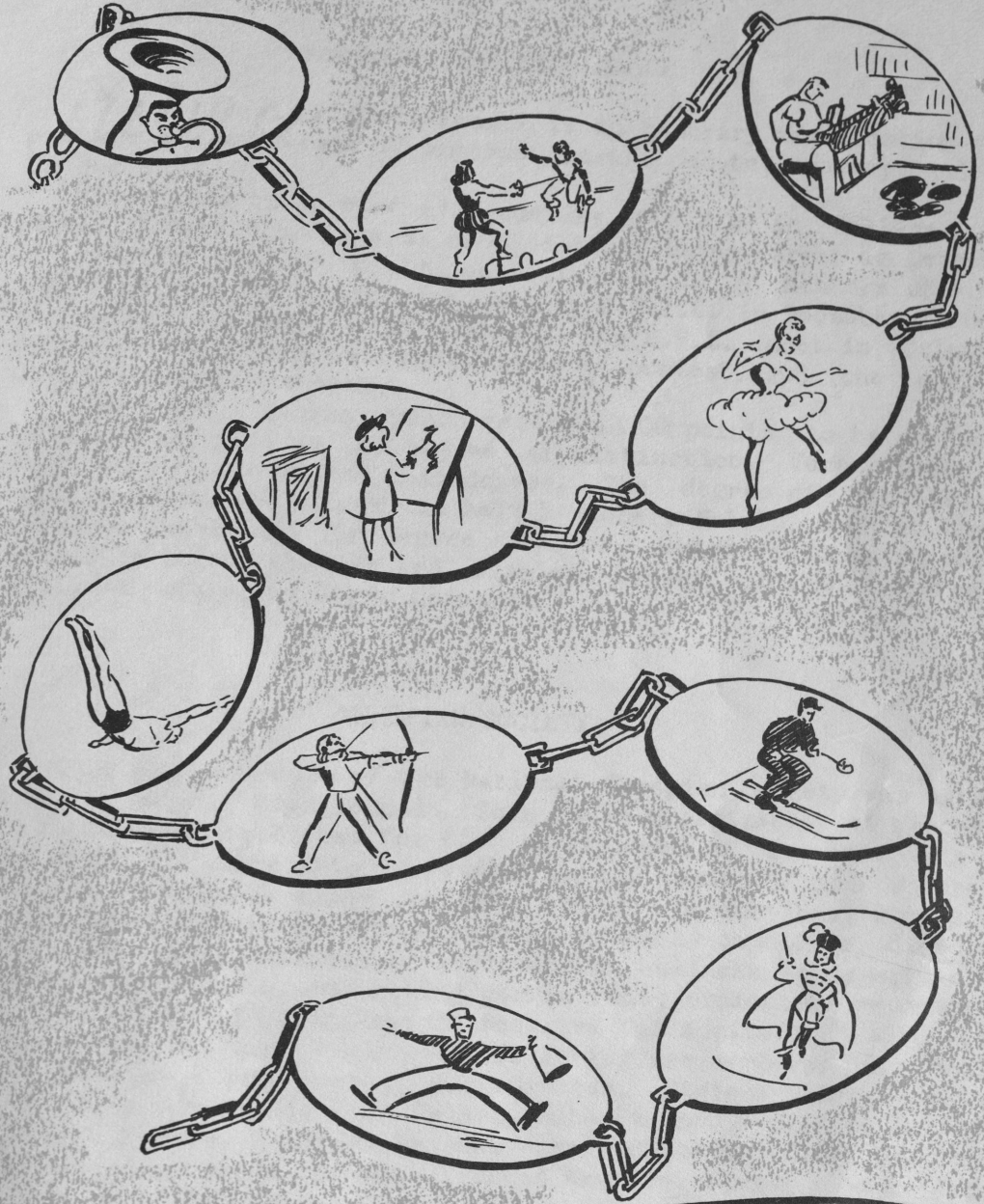
M. Jensen, S. Johnson, R. Spencer, R. Hegland, C. Bernhardson, D. Karlstrom, P. Baugh, B. Pönd, N. Brandt, J. Boelter, U. Orud, E. Fischer, M. Dix, D. Jacobson, P. Bullock, B. Booth, G. Anderson, D. Hendrickson, B. Gulsvig, M. Kassenborg, D. Ledeboer, P. Peterson, N. Rice, M. Kleven, J. Schoephoerster Not pictured, Shirley Melby, and Robert Rasmusson.

### Eighth Grade History

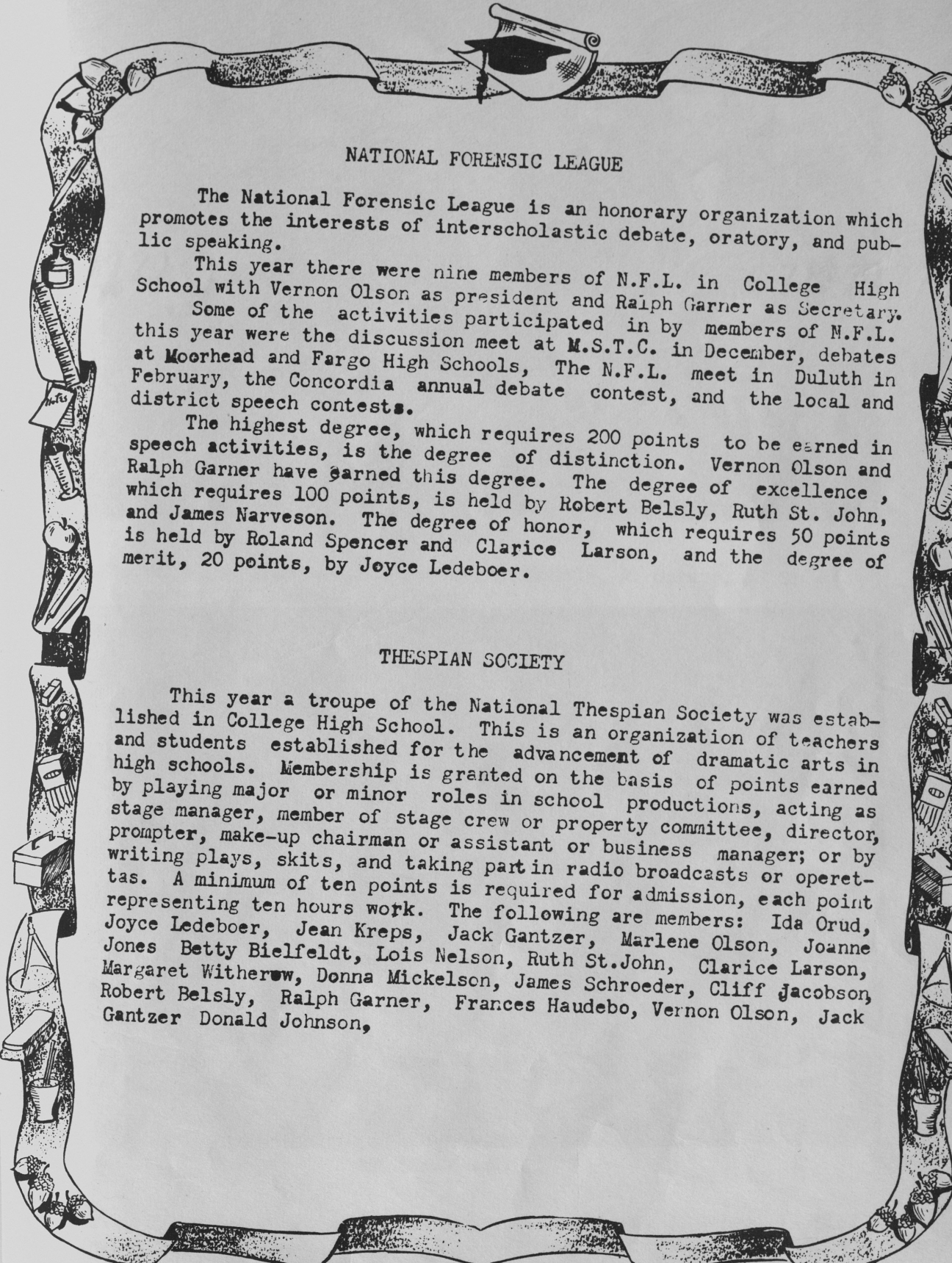
The eighth-grade class of 1947-1948 has twenty-seven members. Of these, twelve have been classmates together since the first grade. The girls outnumber the boys three to one.

Class officers for 1947-1948 are as follows: President, Joan Boelter; Vice-President, Duane Karlstrom; Secretary, Norma Rice; Treasurer, Richard Spencer; Reporter, Janice Schoephoerster; Student Commission Representative, Geraldine Anderson.

Grade eight has ambitions for the future. The girls are looking forward to having a basketball team. The boys want a glee club and a good basketball team. Perhaps, most of all, students in grade eight want to continue as a class together until their graduation in 1952.



# Activities



## NATIONAL FORENSIC LEAGUE

The National Forensic League is an honorary organization which promotes the interests of interscholastic debate, oratory, and public speaking.

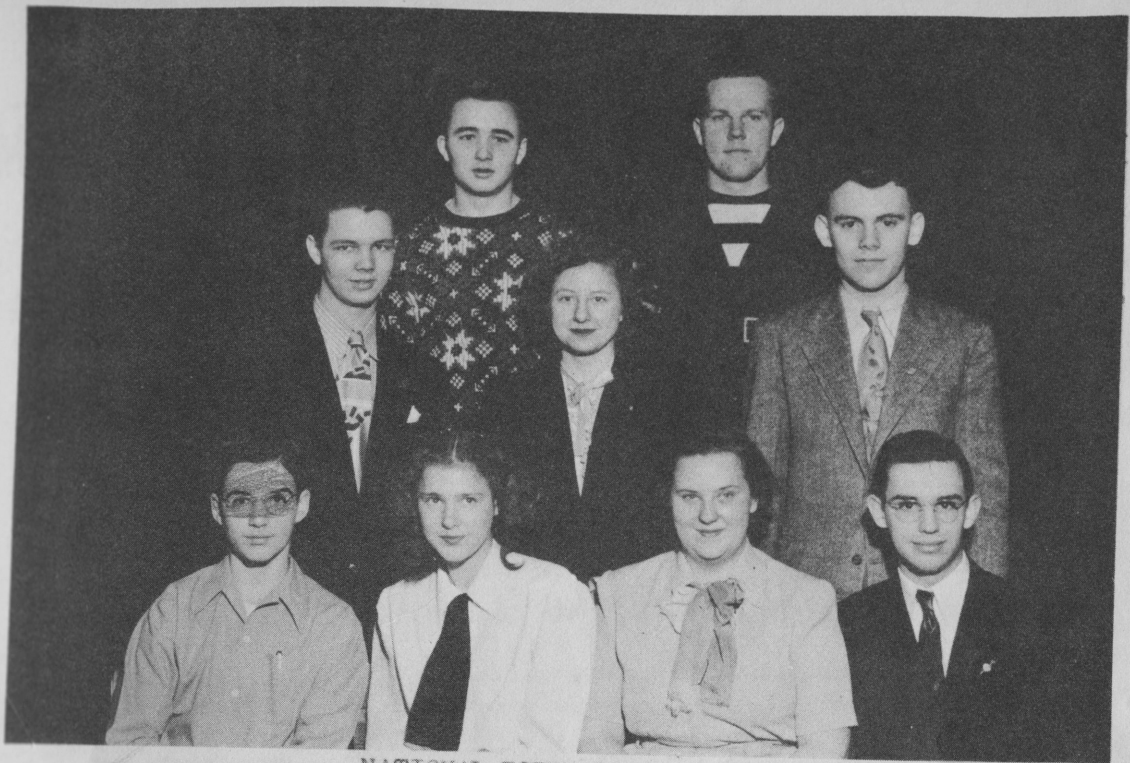
This year there were nine members of N.F.L. in College High School with Vernon Olson as president and Ralph Garner as Secretary.

Some of the activities participated in by members of N.F.L. this year were the discussion meet at M.S.T.C. in December, debates at Moorhead and Fargo High Schools, The N.F.L. meet in Duluth in February, the Concordia annual debate contest, and the local and district speech contests.

The highest degree, which requires 200 points to be earned in speech activities, is the degree of distinction. Vernon Olson and Ralph Garner have earned this degree. The degree of excellence, which requires 100 points, is held by Robert Belsly, Ruth St. John, and James Narveson. The degree of honor, which requires 50 points is held by Roland Spencer and Clarice Larson, and the degree of merit, 20 points, by Joyce Ledebor.

## THESPIAN SOCIETY

This year a troupe of the National Thespian Society was established in College High School. This is an organization of teachers and students established for the advancement of dramatic arts in high schools. Membership is granted on the basis of points earned by playing major or minor roles in school productions, acting as stage manager, member of stage crew or property committee, director, prompter, make-up chairman or assistant or business manager; or by writing plays, skits, and taking part in radio broadcasts or operettas. A minimum of ten points is required for admission, each point representing ten hours work. The following are members: Ida Orud, Joyce Ledebor, Jean Kreps, Jack Gantzer, Marlene Olson, Joanne Jones Betty Bielfeldt, Lois Nelson, Ruth St. John, Clarice Larson, Margaret Witherow, Donna Mickelson, James Schroeder, Cliff Jacobson, Robert Belsly, Ralph Garner, Frances Haudebo, Vernon Olson, Jack Gantzer Donald Johnson,



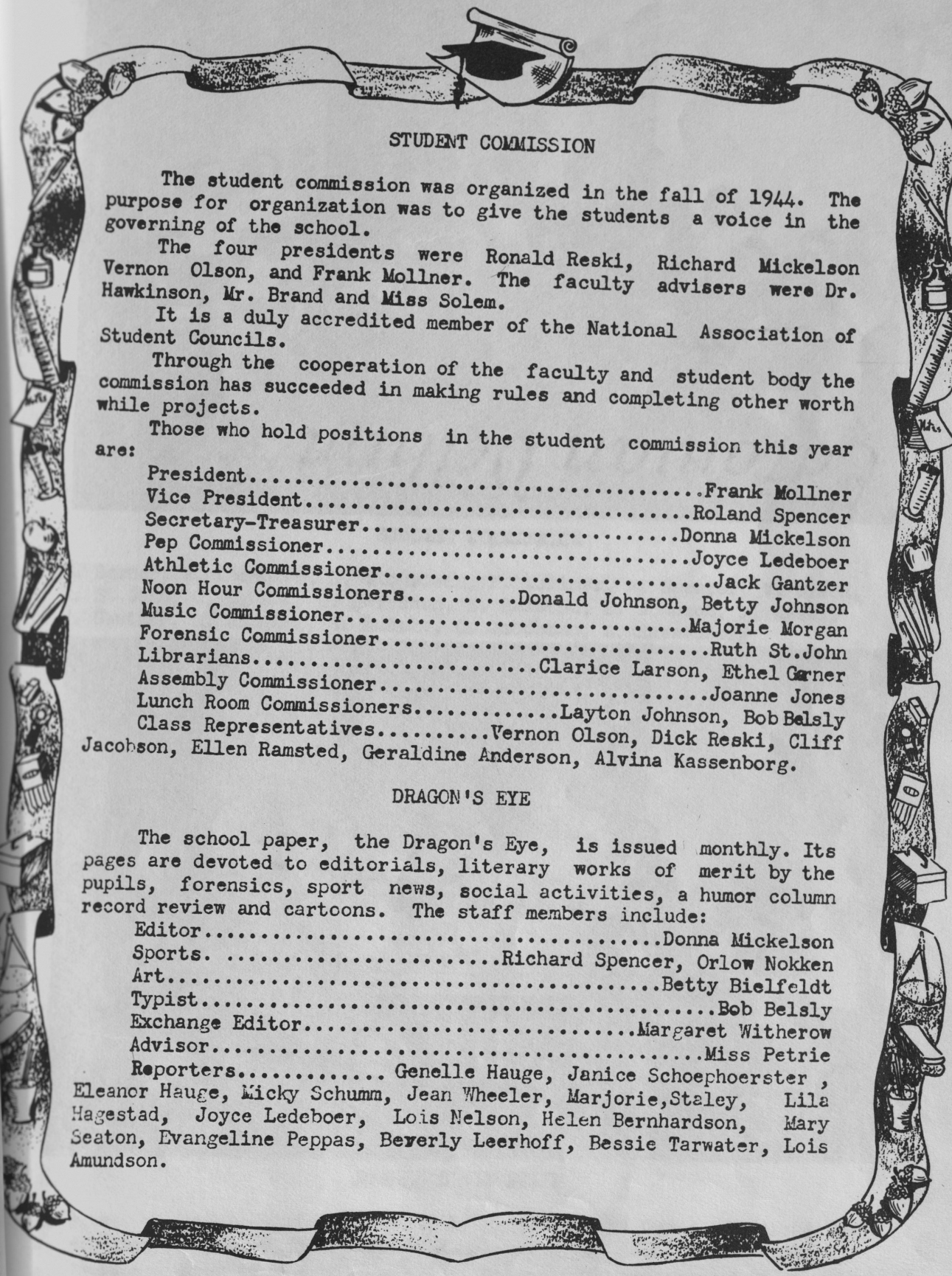
NATIONAL FORENSIC LEAGUE

J. Narveson, J. Ledeboer, C. Larson, R. Belsly, R. Garner, R. St. John,  
 J. Schroeder, R. Spencer, V. Olson



THESPIAN SOCIETY

I. Orud, J. Ledeboer, J. Kreps, J. Gantzer, M. Olson, J. Jones, B. Bielfeldt,  
 L. Nelson, R. St. John, C. Larson, M. Witherow, D. Mickelson, J. Schroeder,  
 J. Narveson, C. Jacobson, R. Belsly, R. Garner, F. Haukebo, R. Spencer,  
 V. Olson, J. Gantzer, T. Reski, D. Johnson



## STUDENT COMMISSION

The student commission was organized in the fall of 1944. The purpose for organization was to give the students a voice in the governing of the school.

The four presidents were Ronald Reski, Richard Mickelson, Vernon Olson, and Frank Mollner. The faculty advisers were Dr. Hawkinson, Mr. Brand and Miss Solem.

It is a duly accredited member of the National Association of Student Councils.

Through the cooperation of the faculty and student body the commission has succeeded in making rules and completing other worthwhile projects.

Those who hold positions in the student commission this year are:

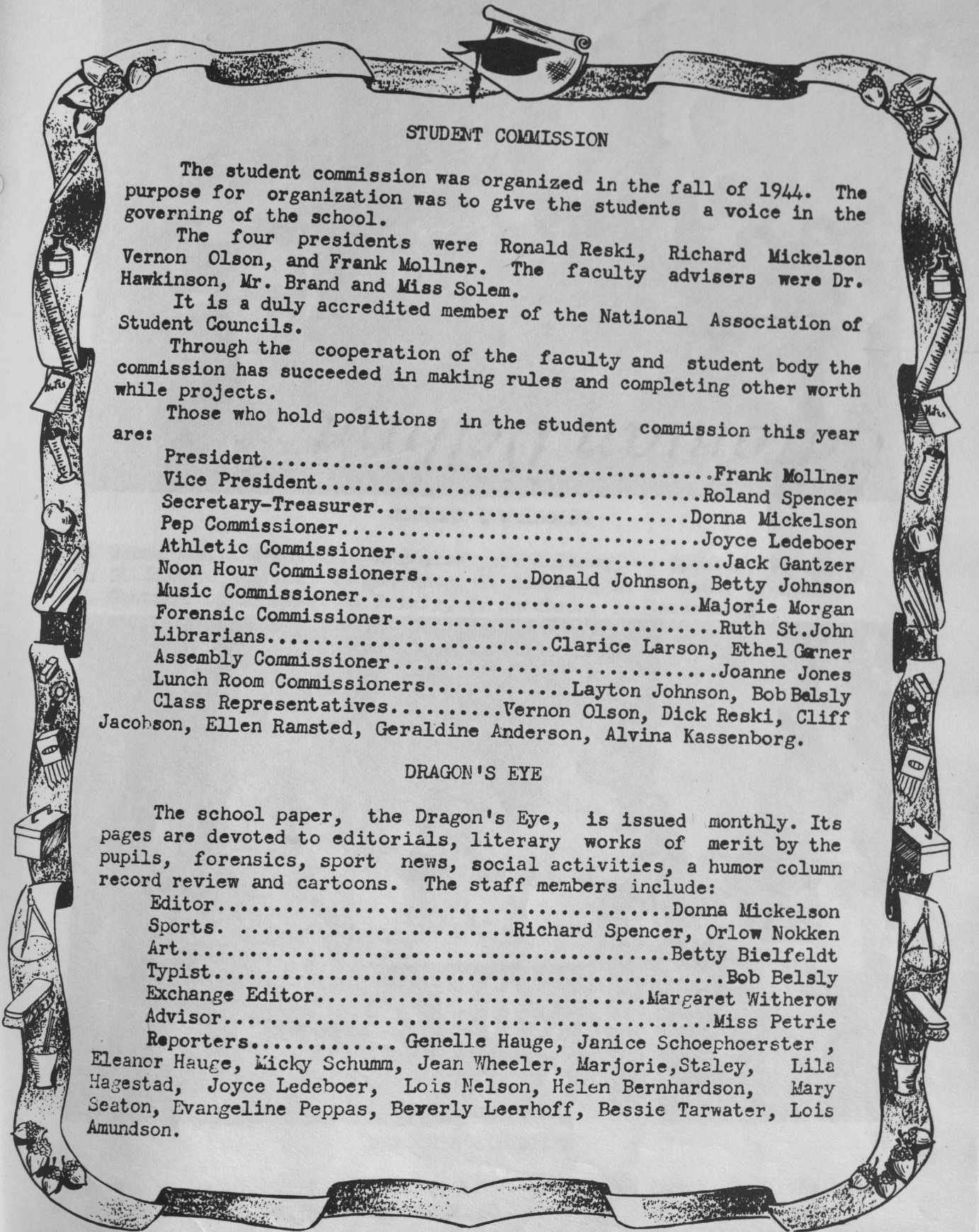
President.....	Frank Mollner
Vice President.....	Roland Spencer
Secretary-Treasurer.....	Donna Mickelson
Pep Commissioner.....	Joyce Ledebor
Athletic Commissioner.....	Jack Gantzer
Noon Hour Commissioners.....	Donald Johnson, Betty Johnson
Music Commissioner.....	Majorie Morgan
Forensic Commissioner.....	Ruth St. John
Librarians.....	Clarice Larson, Ethel Garner
Assembly Commissioner.....	Joanne Jones
Lunch Room Commissioners.....	Layton Johnson, Bob Belsly
Class Representatives.....	Vernon Olson, Dick Reski, Cliff Jacobson, Ellen Ramsted, Geraldine Anderson, Alvina Kassenborg.

## DRAGON'S EYE

The school paper, the Dragon's Eye, is issued monthly. Its pages are devoted to editorials, literary works of merit by the pupils, forensics, sport news, social activities, a humor column record review and cartoons. The staff members include:

Editor.....	Donna Mickelson
Sports.....	Richard Spencer, Orlow Nokken
Art.....	Betty Bielfeldt
Typist.....	Bob Belsly
Exchange Editor.....	Margaret Witherow
Advisor.....	Miss Petrie
Reporters.....	Genelle Hauge, Janice Schoephoerster, Eleanor Hauge, Micky Schumm, Jean Wheeler, Marjorie Staley, Lila Hagestad, Joyce Ledebor, Lois Nelson, Helen Bernhardson, Mary Seaton, Evangeline Peppas, Beverly Leerhoff, Bessie Tarwater, Lois Amundson.





## STUDENT COMMISSION

The student commission was organized in the fall of 1944. The purpose for organization was to give the students a voice in the governing of the school.

The four presidents were Ronald Reski, Richard Mickelson, Vernon Olson, and Frank Mollner. The faculty advisers were Dr. Hawkinson, Mr. Brand and Miss Solem.

It is a duly accredited member of the National Association of Student Councils.

Through the cooperation of the faculty and student body the commission has succeeded in making rules and completing other worthwhile projects.

Those who hold positions in the student commission this year are:

President.....	Frank Mollner
Vice President.....	Roland Spencer
Secretary-Treasurer.....	Donna Mickelson
Pep Commissioner.....	Joyce Ledebor
Athletic Commissioner.....	Jack Gantzer
Noon Hour Commissioners.....	Donald Johnson, Betty Johnson
Music Commissioner.....	Majorie Morgan
Forensic Commissioner.....	Ruth St. John
Librarians.....	Clarice Larson, Ethel Garner
Assembly Commissioner.....	Joanne Jones
Lunch Room Commissioners.....	Layton Johnson, Bob Belsly
Class Representatives.....	Vernon Olson, Dick Reski, Cliff Jacobson, Ellen Ramsted, Geraldine Anderson, Alvina Kassenborg.

## DRAGON'S EYE

The school paper, the Dragon's Eye, is issued monthly. Its pages are devoted to editorials, literary works of merit by the pupils, forensics, sport news, social activities, a humor column record review and cartoons. The staff members include:

Editor.....	Donna Mickelson
Sports.....	Richard Spencer, Orlow Nokken
Art.....	Betty Bielfeldt
Typist.....	Bob Belsly
Exchange Editor.....	Margaret Witherow
Advisor.....	Miss Petrie
Reporters.....	Genelle Hauge, Janice Schoepfoerster, Eleanor Hauge, Micky Schumm, Jean Wheeler, Marjorie, Staley, Lila Hagestad, Joyce Ledebor, Lois Nelson, Helen Bernhardson, Mary Seaton, Evangeline Peppas, Beverly Leerhoff, Bessie Tarwater, Lois Amundson.



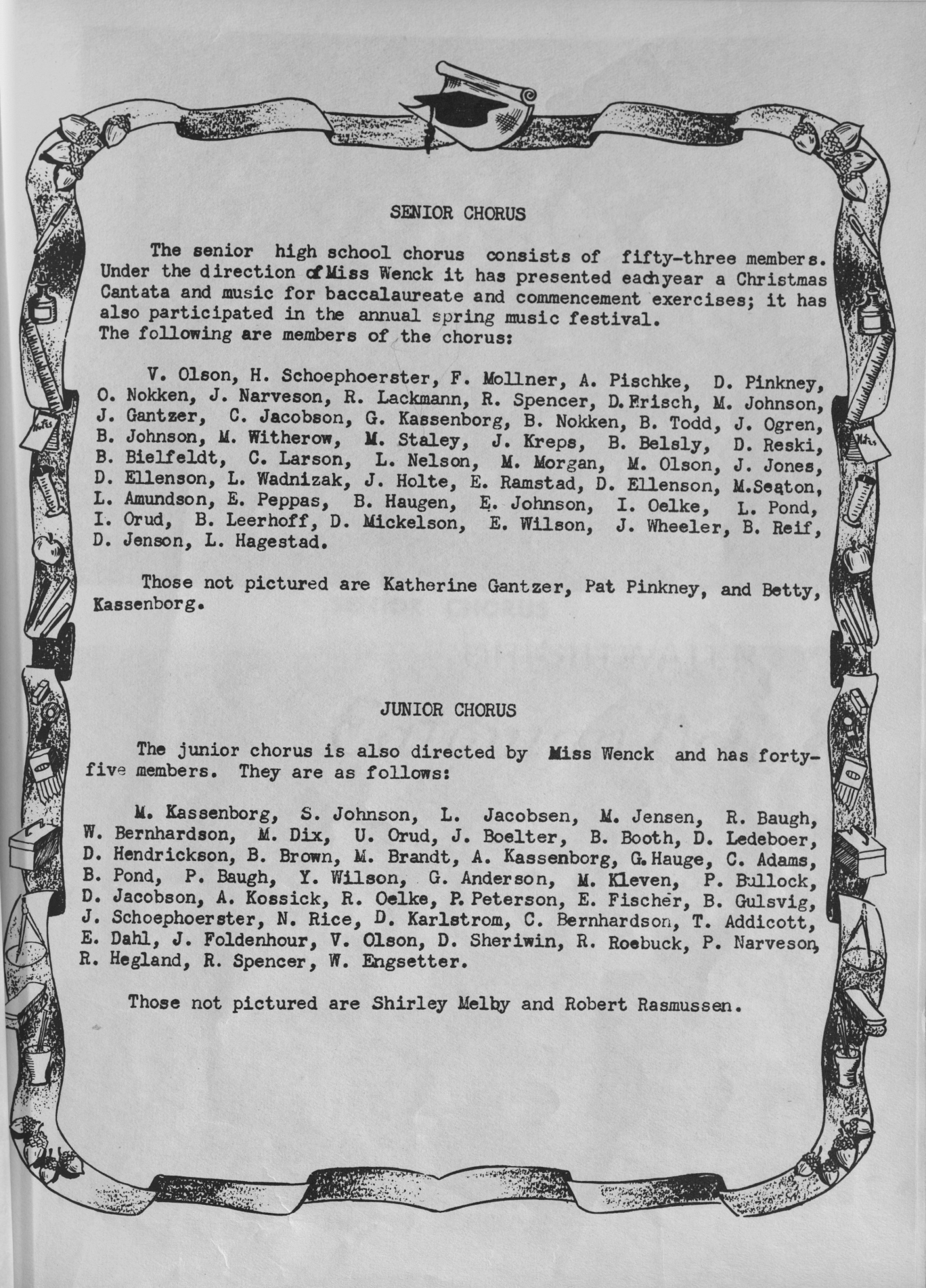
STUDENT COMMISSION

E. Garner, J. Ledeboer, D. Mickelson, F. Mollner, R. Spencer, V. Olson,  
 R. St. John, C. Larson, G. Anderson, E. Ramsted, L. Johnson, D. Reski,  
 J. Gantzer, D. Johnson, R. Belsly, C. Jacobson, A. Kassenborg



DRAGON'S EYE STAFF

E. Hauge, J. Ledeboer, L. Hagestad, B. Bielfeldt, J. Ogren, D. Mickelson,  
 J. Wheeler, M. Staley, D. Spencer, M. Witherow, M. Seaton, R. Belsly,  
 B. Tarwater, Miss Petrie, G. Hauge, M. Schumm, J. Schoephoerster, B. Leerhoff,  
 H. Bernhardson, O. Nokken, E. Peppas, L. Amundson



## SENIOR CHORUS

The senior high school chorus consists of fifty-three members. Under the direction of Miss Wenck it has presented each year a Christmas Cantata and music for baccalaureate and commencement exercises; it has also participated in the annual spring music festival. The following are members of the chorus:

V. Olson, H. Schoephoerster, F. Mollner, A. Pischke, D. Pinkney, O. Nokken, J. Narveson, R. Lackmann, R. Spencer, D. Erisch, M. Johnson, J. Gantzer, C. Jacobson, G. Kassenborg, B. Nokken, B. Todd, J. Ogren, B. Johnson, M. Witherow, M. Staley, J. Kreps, B. Belsly, D. Reski, B. Bielfeldt, C. Larson, L. Nelson, M. Morgan, M. Olson, J. Jones, D. Ellenson, L. Wadnizak, J. Holte, E. Ramstad, D. Ellenson, M. Seaton, L. Amundson, E. Peppas, B. Haugen, E. Johnson, I. Oelke, L. Pond, I. Orud, B. Leerhoff, D. Mickelson, E. Wilson, J. Wheeler, B. Reif, D. Jenson, L. Hagestad.

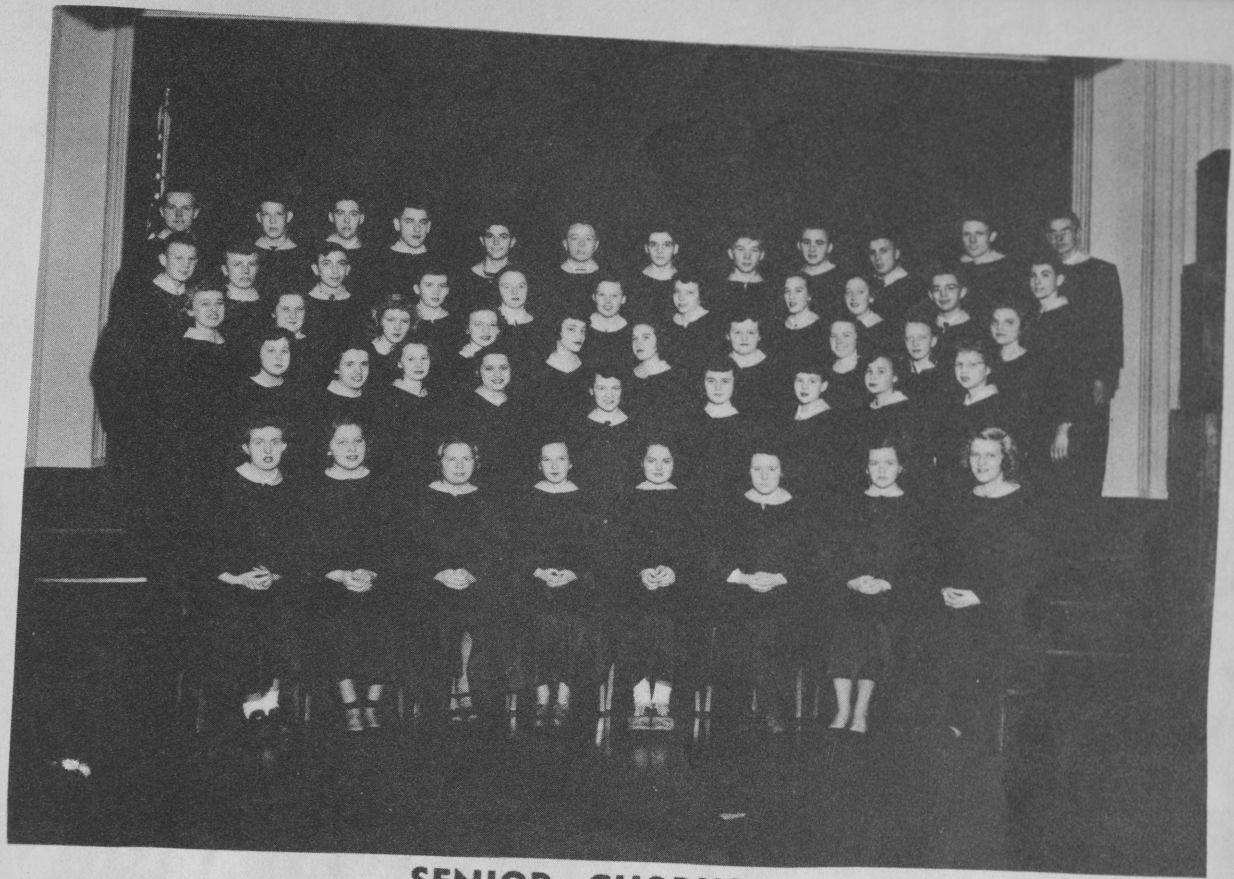
Those not pictured are Katherine Gantzer, Pat Pinkney, and Betty, Kassenborg.

## JUNIOR CHORUS

The junior chorus is also directed by Miss Wenck and has forty-five members. They are as follows:

M. Kassenborg, S. Johnson, L. Jacobsen, M. Jensen, R. Baugh, W. Bernhardson, M. Dix, U. Orud, J. Boelter, B. Booth, D. Ledeboer, D. Hendrickson, B. Brown, M. Brandt, A. Kassenborg, G. Hauge, C. Adams, B. Pond, P. Baugh, Y. Wilson, G. Anderson, M. Kleven, P. Bullock, D. Jacobson, A. Kossick, R. Oelke, P. Peterson, E. Fischer, B. Gulsvig, J. Schoephoerster, N. Rice, D. Karlstrom, C. Bernhardson, T. Addicott, E. Dahl, J. Foldenhour, V. Olson, D. Sheriwin, R. Roebuck, P. Narveson, R. Hegland, R. Spencer, W. Engsetter.

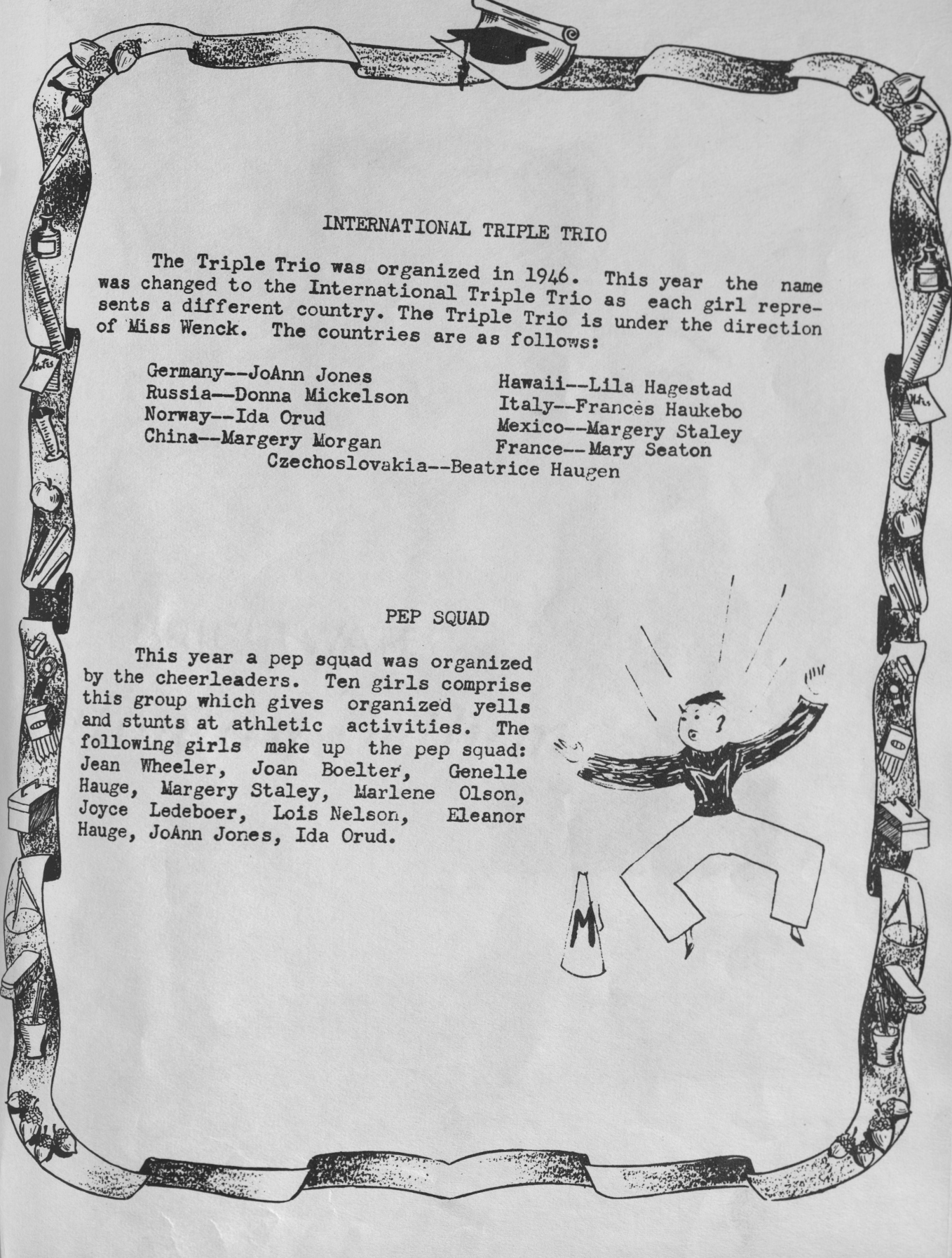
Those not pictured are Shirley Melby and Robert Rasmussen.



**SENIOR CHORUS**



**JUNIOR CHORUS**



### INTERNATIONAL TRIPLE TRIO

The Triple Trio was organized in 1946. This year the name was changed to the International Triple Trio as each girl represents a different country. The Triple Trio is under the direction of Miss Wenck. The countries are as follows:

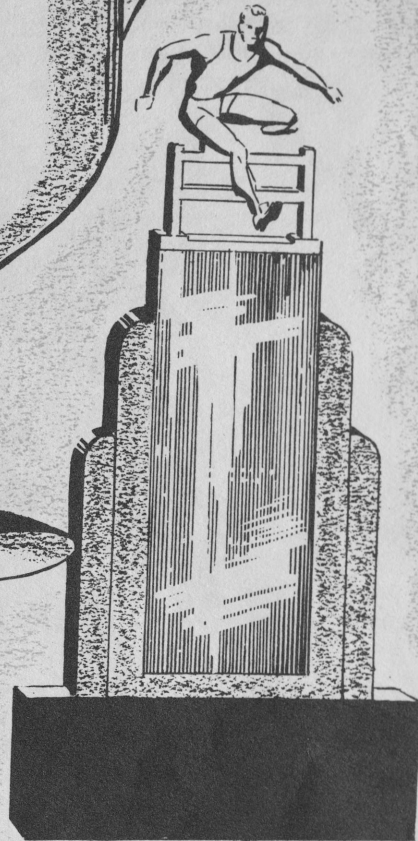
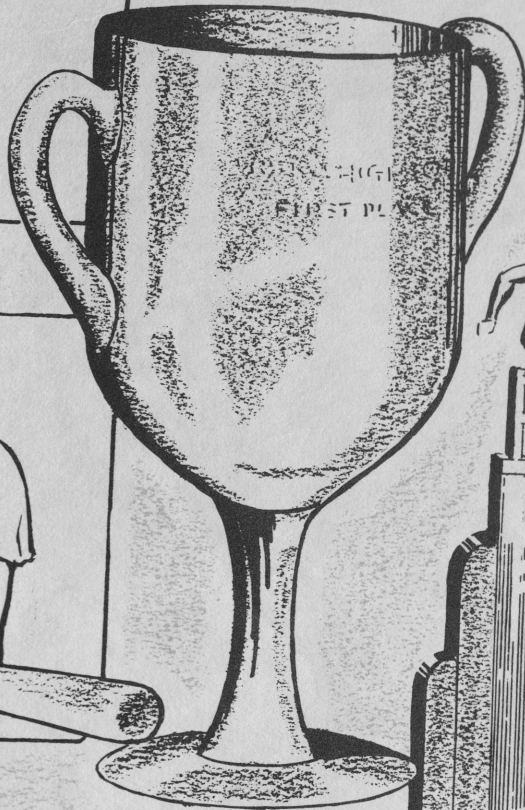
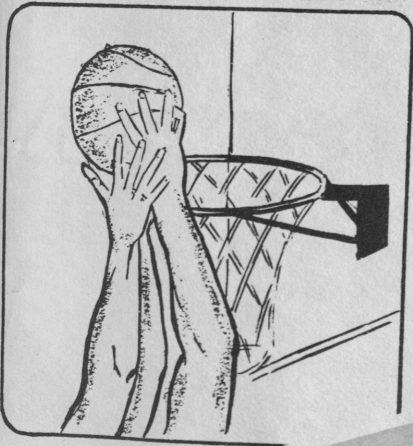
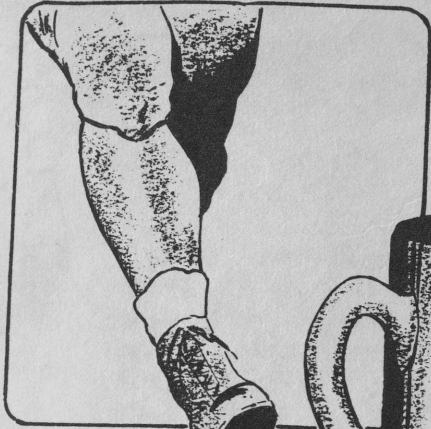
Germany--JoAnn Jones  
Russia--Donna Mickelson  
Norway--Ida Orud  
China--Margery Morgan

Hawaii--Lila Hagestad  
Italy--Francès Haukebo  
Mexico--Margery Staley  
France--Mary Seaton  
Czechoslovakia--Beatrice Haugen

### PEP SQUAD

This year a pep squad was organized by the cheerleaders. Ten girls comprise this group which gives organized yells and stunts at athletic activities. The following girls make up the pep squad: Jean Wheeler, Joan Boelter, Genelle Hauge, Margery Staley, Marlene Olson, Joyce Ledebøer, Lois Nelson, Eleanor Hauge, JoAnn Jones, Ida Orud.





*athletics*

## FOOTBALL

Under the direction of Don Anderson, our football team records show the Baby Dragons had won four and lost three games last season. They gained fourth place in the Little Valley Conference Competition. Vernon Olson, Captain and steady performer for the Baby Dragon cause, gained the half-back position on the Little Valley All-Conference team. Those on the first team were Captain Vernon Olson, James Schroder, Tom Reski, Hugh Schoephoerster, Roland Spencer, and Frank Mollner. The games played and the scores are as follows:

Felton	12	M.S. High	32
Ulen	6	M.S. High	27
Hitterdal	30	M.S. High	47
Audubon	25	M.S. High	14
Glyndon	20	M.S. High	7
Lake Park	31	M.S. High	14

## BASKETBALL

Though our Baby Dragon basketball team did not have such a good record in the win column this last season, the boys fought hard for every game. The first ten included Capt. Tom Reski, James Schroeder, Dick Reski, Roland Spencer, Roland Lackmann, Glenn Kassenborg Hugh Schoephoerster, Jack Gantzer, Frank Mollner, and Melvin Johnson.

Roland Lackmann, one of our star performers, was selected for a guard berth on the Fargo-Moorhead All-City team and also gained a berth on the Little Valley All-Conference team.

Our B team had an excellent record this last season, winning fourteen of the sixteen games played. The A team games played and the scores are as follows:

Alumni	26	M.S. High	25	Comstock	36	M.S. High	31
Comstock	44	M.S. High	22	Felton	25	M.S. High	40
Oak Grove	26	M.S. High	37	Audubon	52	M.S. High	24
Ulen	29	M.S. High	32	Oak Grove	37	M.S. High	31
Hawley	40	M.S. High	27	Hawley	48	M.S. High	32
Lake Park	26	M.S. High	39	Alumni	40	M.S. High	50
Dilworth	35	M.S. High	25	West Fargo	40	M.S. High	36
Glydon	53	M.S. High	25	Dilworth	53	M.S. High	34
				West Fargo	49	M.S. High	36









*Sensational!*

www  
www  
www  
www

CLEANS  
FAST!

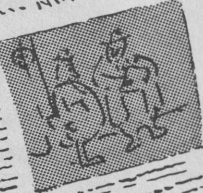
January  
1955

# ADVERTISING

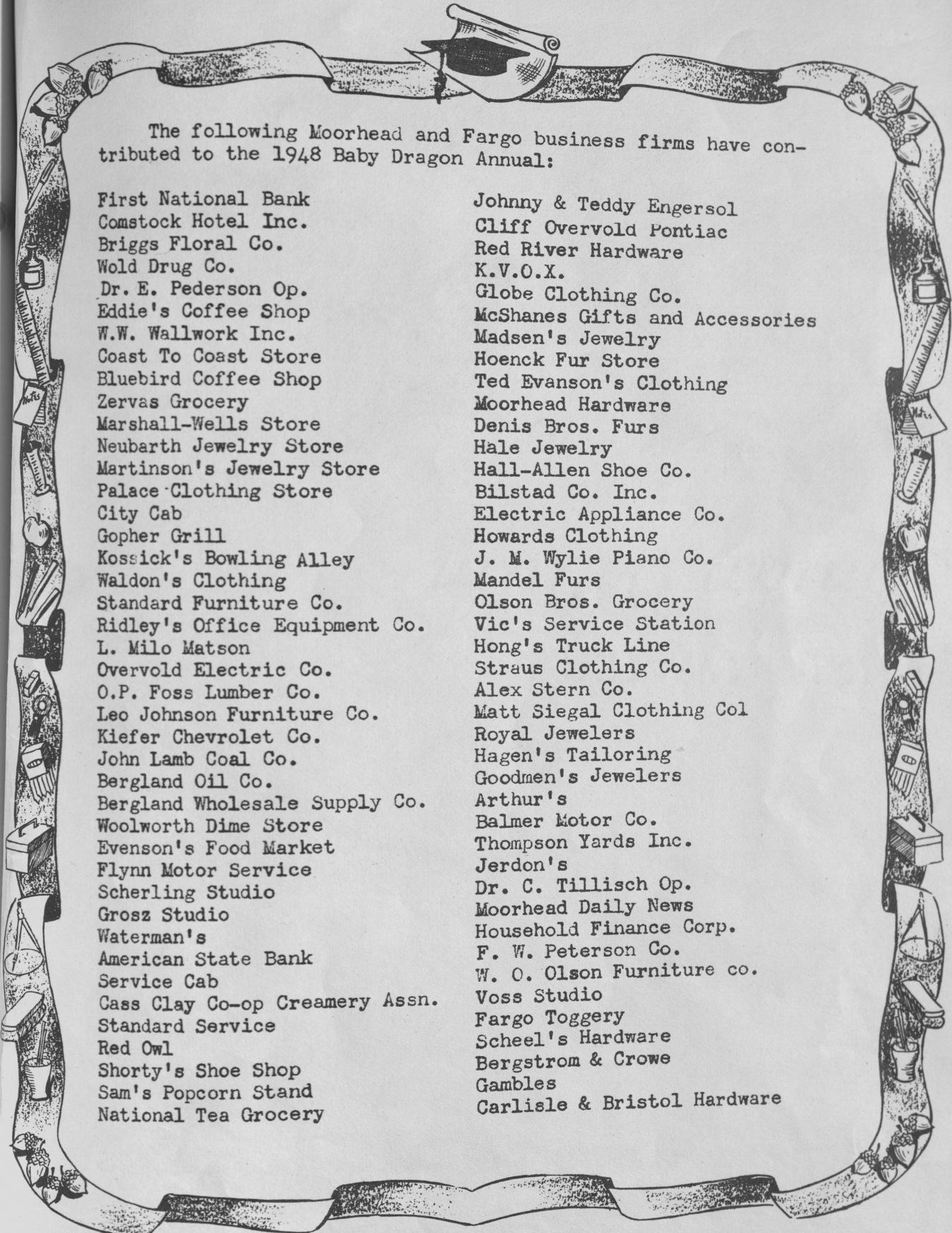
PUBLISHED BY THE ADVERTISING PRESS

REVENUE  
ADVERTISING  
ADVERTISING

REVENUE  
ADVERTISING



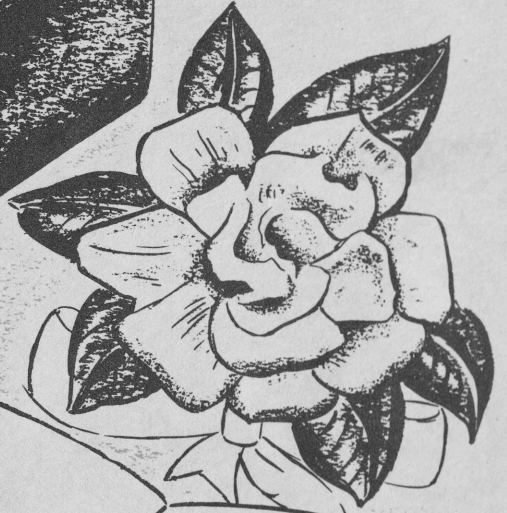
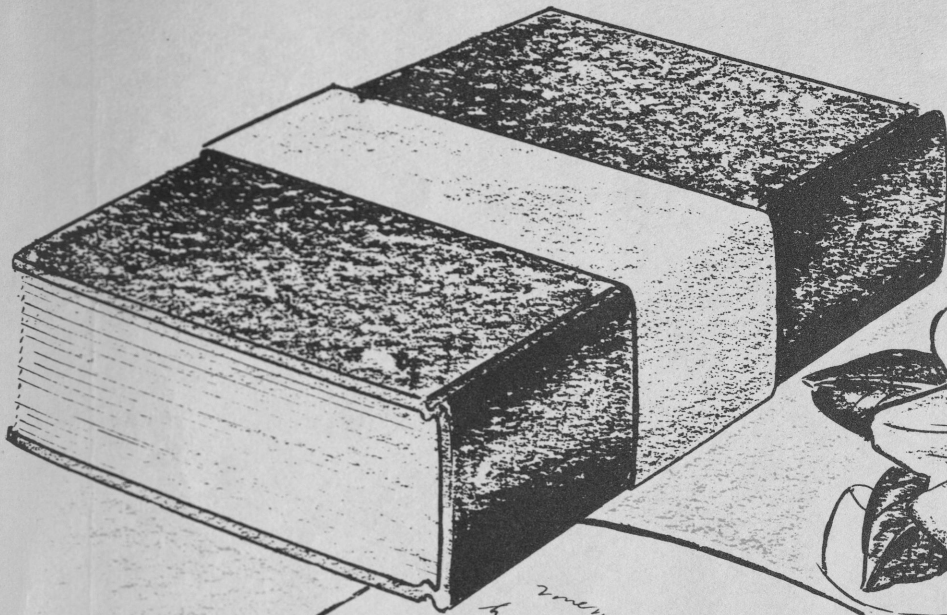
+ 2



The following Moorhead and Fargo business firms have contributed to the 1948 Baby Dragon Annual:

First National Bank  
Comstock Hotel Inc.  
Briggs Floral Co.  
Wold Drug Co.  
Dr. E. Pederson Op.  
Eddie's Coffee Shop  
W.W. Wallwork Inc.  
Coast To Coast Store  
Bluebird Coffee Shop  
Zervas Grocery  
Marshall-Wells Store  
Neubarth Jewelry Store  
Martinson's Jewelry Store  
Palace Clothing Store  
City Cab  
Gopher Grill  
Kossick's Bowling Alley  
Waldon's Clothing  
Standard Furniture Co.  
Ridley's Office Equipment Co.  
L. Milo Matson  
Overvold Electric Co.  
O.P. Foss Lumber Co.  
Leo Johnson Furniture Co.  
Kiefer Chevrolet Co.  
John Lamb Coal Co.  
Bergland Oil Co.  
Bergland Wholesale Supply Co.  
Woolworth Dime Store  
Evenson's Food Market  
Flynn Motor Service  
Scherling Studio  
Grosz Studio  
Waterman's  
American State Bank  
Service Cab  
Cass Clay Co-op Creamery Assn.  
Standard Service  
Red Owl  
Shorty's Shoe Shop  
Sam's Popcorn Stand  
National Tea Grocery

Johnny & Teddy Engersol  
Cliff Overvold Pontiac  
Red River Hardware  
K.V.O.X.  
Globe Clothing Co.  
McShanes Gifts and Accessories  
Madsen's Jewelry  
Hoenck Fur Store  
Ted Evanson's Clothing  
Moorhead Hardware  
Denis Bros. Furs  
Hale Jewelry  
Hall-Allen Shoe Co.  
Bilstad Co. Inc.  
Electric Appliance Co.  
Howards Clothing  
J. M. Wylie Piano Co.  
Mandel Furs  
Olson Bros. Grocery  
Vic's Service Station  
Hong's Truck Line  
Straus Clothing Co.  
Alex Stern Co.  
Matt Siegal Clothing Col  
Royal Jewelers  
Hagen's Tailoring  
Goodmen's Jewelers  
Arthur's  
Balmer Motor Co.  
Thompson Yards Inc.  
Jerdon's  
Dr. C. Tillisch Op.  
Moorhead Daily News  
Household Finance Corp.  
F. W. Peterson Co.  
W. O. Olson Furniture co.  
Voss Studio  
Fargo Toggery  
Scheel's Hardware  
Bergstrom & Crowe  
Gambles  
Carlisle & Bristol Hardware



remembrance of many  
happy hours so  
of the

Many  
wishes  
for the  
future  
I yearn about the  
the - rest on the  
piece

You have created  
in your  
life  
job.

Mary

Wishes to a friend  
and an all round  
fellow

to one of the most ple  
friends one could ever  
know

you Braden  
Mary Susan  
Katherine M. Braden

# Autographs



1. 1946-47 football team.

2. Wasn't Tom cute?

3. Guess Who?

4. Looks familiar, doesn't it?

5. Isn't she cute?

6. The new look!

7. The woman hater with a woman!

8. None other than Don J.

9. The old look!

10. Farmer's daughter!

11. Junior Mr.

12. One or the other!

13. Two old friends!

14. Our warbler!

15. Smoke, Smoke, Smoke!

16. Junior date bait!

17. On the way to Health Ed.

18. Joyce makes a catch!

19. Nice, hummmmmmm!!

20. Steadies!

21. What are you hiding?

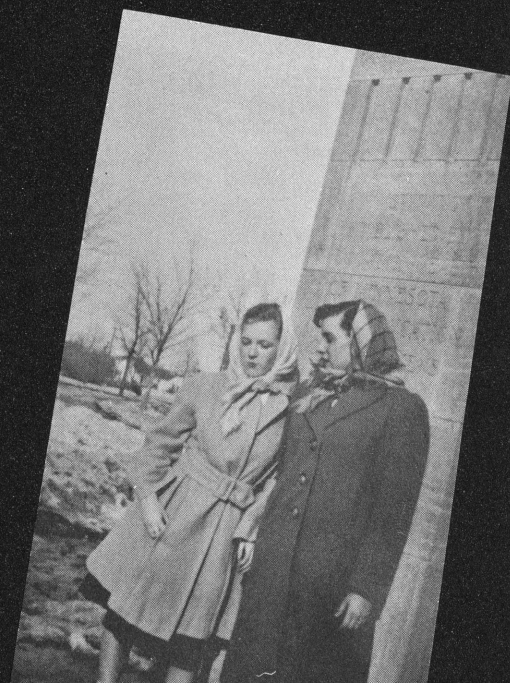
22. Spring is here!

23. Don't look so shy, JoAnn!

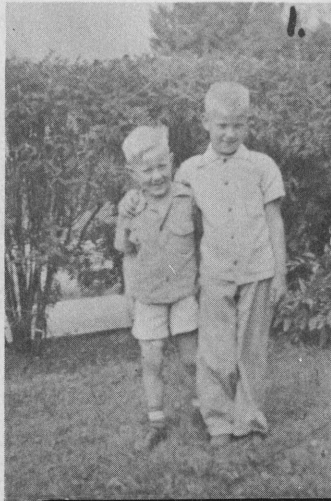
24. Bob B. still likes dolls!



- |                                 |                             |                          |
|---------------------------------|-----------------------------|--------------------------|
| 1. Long, Long Ago               | 11. Queenie                 | 21. Two-timer!           |
| 2. Come on in--the snow's fine! | 12. The Cherrio crowd!      | 22. Mutt and Jeff        |
| 3. In the good old summer time! | 13. Four crazy Seniors      | 23. Getting Friendly?    |
| 4. Those Juniors!               | 14. Out to have a good time | 24. King of Jokes        |
| 5. Guess who? (Evangeline P.)   | 15. Love is grand!          | 25. The Colgate smile!   |
| 6. Football hero?               | 16. Margie in babyhood!!    | 26. Arn't we strong?     |
| 7. Margie and some he-men!      | 17. Lookin' for lovin'      | 27. Beauty and the Beast |
| 8. Star-gazers                  | 18. The Mad Swede!          |                          |
| 9. The Conga Line               | 19. Rock a by baby          |                          |
| 10. Making money for the prom!  | 20. Freckles                |                          |



1. Taking it easy again!  
Musketeers. 5. Bored?  
9. Scornful sister. 10.  
12. Bury her alive. 13.  
16. The old look! 17. W



1.



2.



3.



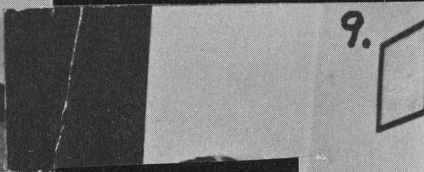
4.



6.



8.



9.



10.



12.

1. They must be brothers. 2. Give daddy a kiss. 3. Sidewalk beauty. 4. It must be Carol. 5. Behind bars. 6. Sitting pretty. 7. That's pretty nice. 8. Your quite the guy, Bill. 9. Bashful Dick. 10. More fun, eh! 11. Sleepy time gals. 12. Presentation. 13. Good Morning!





1. Oh those parties. 2. Peek-a-boo slips. 3. Bathing beauty. 4. Is her face that bad? 5. Naive. 6. Bored Glenn? 7. Does it taste good Jean? 8. Posing? 9. Remember when--- 10. Smile pretty. 11. "Baby Face" 12. Our director. 13. Waring's fans. 14. "Dottie" looks up. 15. Backbend. 16. "Nice" 17. Chicken lover. 18. This is the way to brush your teeth. 19. Foshay Tower no doubt! 20. Sweater girl. 21. Good old school.

**WALSORTH**  
 Lithographed & Bound by  
**WALSORTH BROTHERS**  
 Marceline, Mo., U. S. A.

## HOMECOMING

M.S.T.C. High was host to its alumni during the annual homecoming celebration. M.S.T.C. High's queen, who reigned over the 1947 festivities, was Bessie Marie Tarwater. She initiated the ceremonies in a very regal manner. The coronation ceremonies began at seven o'clock with the procession introducing the royalty.

Coach Don Anderson introduced our Baby Dragon team, which was to meet the alumni in the homecoming game. Vocal solos were rendered by Miss Johnston and Jim Preston. Ruth Hoglund and Katherine Tesier sang a tribute to the queen. Vernon Olson, football captain, crowned the queen. The ceremonies ended with the audience's singing of "March, March, on down the Field," our school song, which put all in the spirit for the game which was to follow. The Baby Dragon team took on the alumni and beat them 28-12. A dance in the high school auditorium after the game culminated the evening's festivities.



Queen Bessie Marie.I



M. Seaton, Crown Bearer, P. Grosz, Escort, Attendants, J. Schoephoerster, E. Johnson, M. Seaton, Queen Bessie, Attendants, L. Nelson, I. Oelke, G. Hauge, Rose Bearer, D. Waits.



J. Jones, D. Mickelson, I. Orud, M. Morgan, L. Hagestad, F. Haukebo,  
M. Staley, M. Seaton, B. Haugen



CHEERLEADERS

Top row: J. Wheeler, J. Boelter, G. Hauge, M. Staley, M. Olson  
Bottom row: J. Ledeboer, L. Nelson, E. Hauge, J. Jones, I. Orud

FEATU

